

bs-2499R**[Primary Antibody]****CD69 Rabbit pAb****Bioss**
ANTIBODIES

www.bioss.com.cn

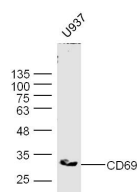
sales@bioss.com.cn

techsupport@bioss.com.cn

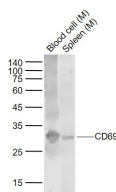
400-901-9800

— DATASHEET —

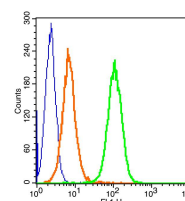
Host: Rabbit	Isotype: IgG	Applications: WB (1:500-2000) Flow-Cyt (1µg/Test)
Clonality: Polyclonal		Reactivity: Human, Mouse (predicted: Rat, Dog)
GeneID: 969	SWISS: Q07108	Predicted MW.: 22 kDa
Target: CD69		Subcellular Location: Cell membrane
Immunogen: KLH conjugated synthetic peptide derived from human CD69: 101-199/199. < Extracellular >		
Purification: affinity purified by Protein A		
Concentration: 1mg/ml		
Storage: 0.01M TBS (pH7.4) with 1% BSA, 0.02% Proclin300 and 50% Glycerol. Shipped at 4°C. Store at -20°C for one year. Avoid repeated freeze/thaw cycles.		
Background: This gene encodes a member of the calcium dependent lectin superfamily of type II transmembrane receptors. Expression of the encoded protein is induced upon activation of T lymphocytes, and may play a role in proliferation. Furthermore, the protein may act to transmit signals in natural killer cells and platelets. [provided by RefSeq, Aug 2011]		

— VALIDATION IMAGES —

Sample: U937 Cell Lysate at 30 ug Primary: Anti-CD69 (bs-2499R) at 1/300 dilution Secondary: IRDye800CW Goat Anti-Rabbit IgG at 1/20000 dilution Predicted band size: 22 kD Observed band size: 34 kD



Sample: Lane 1: Blood cell (Mouse) Lysate at 40 ug Lane 2: Spleen (Mouse) Lysate at 40 ug Primary: Anti-CD69 (bs-2499R) at 1/1000 dilution Secondary: IRDye800CW Goat Anti-Rabbit IgG at 1/20000 dilution Predicted band size: 33/27 kD Observed band size: 30 kD



Blank control(blue): Molt-4 Cells(fixed with 2% paraformaldehyde (10 min)) . Primary Antibody: Rabbit Anti-CD69/FITC Conjugated antibody (bs-2499R/FITC), Dilution: 1µg in 100 µL 1X PBS containing 0.5% BSA; Isotype Control Antibody: Rabbit IgG/FITC(orange) ,used under the same conditions.

— SELECTED CITATIONS —

- **[IF=14.6]** KeLun Zhang. et al. Peripherally induced RORyt+ skin-resident regulatory T cells mediate the efficacy of allergen-specific immunotherapy. SCI TRANSL MED. 2025 May;17(800) IF ;Mouse,Human. 40435216
- **[IF=12.121]** Rouven Hoefflin. et al. HIF-1α and HIF-2α differently regulate tumour development and inflammation of clear cell renal cell carcinoma in mice. Nat Commun. 2020 Aug;11(1):1-21 IHC ;Mouse. 32807776
- **[IF=10.711]** Zihuan Luo. et al. Ex vivo anchored PD-L1 functionally prevent in vivo renal allograft rejection. BIOENG TRANSL MED. 2022 Apr 06 FCM ;Rat. 10.1002/btm2.10316
- **[IF=8.8]** Hashimoto Masashi. et al. Long-term activation of anti-tumor immunity in pancreatic cancer by a p53-expressing telomerase-specific oncolytic adenovirus. BRIT J CANCER. 2024 Feb;;1-9 IHC ;Human. 38316993
- **[IF=4.12]** Mokuda et al. CD1a+ survivin+ dendritic cell infiltration in dermal lesions of systemic sclerosis. (2015) Arthritis.Res.Ther. 17:275 IHC ;Human. 26419626

Important Note: This product as supplied is intended for research use only, not for use in human, therapeutic or diagnostic applications.