

bs-17100R**[Primary Antibody]****LAPTM5 Rabbit pAb****BioSS**
ANTIBODIES

www.bioss.com.cn

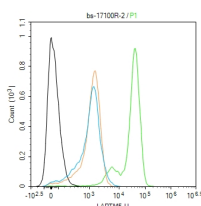
sales@bioss.com.cn

techsupport@bioss.com.cn

400-901-9800

DATASHEET

Host: Rabbit	Isotype: IgG	Applications: Flow-Cyt (2ug/Test)
Clonality: Polyclonal		Reactivity: Human, Mouse (predicted: Rat, Rabbit, Chicken, Horse)
GeneID: 7805	SWISS: Q13571	
Target: LAPTM5		Predicted MW.: 30 kDa
Immunogen: KLH conjugated synthetic peptide derived from human LAPTM5: 101-200/262.		Subcellular Location: Cytoplasm
Purification: affinity purified by Protein A		
Concentration: 1mg/ml		
Storage: 0.01M TBS (pH7.4) with 1% BSA, 0.02% Proclin300 and 50% Glycerol. Shipped at 4°C. Store at -20°C for one year. Avoid repeated freeze/thaw cycles.		
Background: This gene encodes a transmembrane receptor that is associated with lysosomes. The encoded protein, also known as E3 protein, may play a role in hematopoiesis. [provided by RefSeq, Feb 2009]		

VALIDATION IMAGES

Blank control (black line) :U937. Primary Antibody (green line): Rabbit Anti-LAPTM5 antibody (bs-17100R) Dilution:2ug/Test; Secondary Antibody (white blue line) : Goat anti-rabbit IgG-AF488 Dilution: 0.5ug/Test. Isotype control (orange line) : Normal Rabbit IgG Protocol The cells were fixed with 4% PFA (10min at room temperature)and then permeabilized with 90% ice-cold methanol for 20 min at -20°C, The cells were then incubated in 5%BSA to block non-specific protein-protein interactions for 30 min at room temperature .Cells stained with Primary Antibody for 30 min at room temperature. The secondary antibody used for 40 min at room temperature. Acquisition of 20,000 events was performed.

SELECTED CITATIONS

- **[IF=4.136]** Sijia Han. et al. LAPTM5 regulated by FOXP3 promotes the malignant phenotypes of breast cancer through activating the Wnt/ β -catenin pathway. ONCOL REP. 2023 Mar;49(3):1-14 IHC ;Mouse. 36799186