

---

## SIRP Alpha Rabbit pAb

Catalog Number: bs-2708R

Target Protein: SIRP Alpha

Concentration: 1mg/ml

Form: Liquid

Host: Rabbit

Clonality: Polyclonal

Isotype: IgG

Applications: WB (1:500-2000), Flow-Cyt (1µg /test)

Reactivity: Human, Mouse, Rat (predicted:Pig, Cow, Dog, Horse)

Predicted MW: 56 kDa

Subcellular Cell membrane

Locations:

Entrez Gene: 140885

Swiss Prot: P78324

Source: KLH conjugated synthetic peptide derived from human CD172a: 151-250/504.

Purification: affinity purified by Protein A

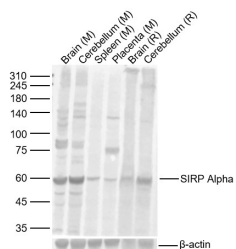
Storage: 0.01M TBS (pH7.4) with 1% BSA, 0.02% Proclin300 and 50% Glycerol.

Shipped at 4°C. Store at -20°C for one year. Avoid repeated freeze/thaw cycles.

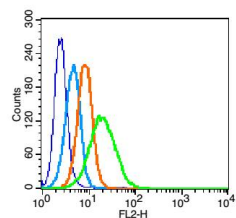
**Background:** Protein tyrosine phosphatases (PTPases) SHP1 and SHP2 are critical regulators in the intracellular signaling pathways that result in cell responses such as mitosis, differentiation, migration, survival, transformation or death. SHP2 is a signal transducer for several receptor tyrosine kinases and cytokine receptors. A novel SHP2 associated glycoprotein was recently cloned from human, rat, mouse and cattle by several labs and was designated SIRPa (1), SHPS1, MyD1, BIT and p84. SIRPa is a new gene family containing at least fifteen members. SIRPa is a substrate of many activated tyrosine kinases such as insulin receptor, EGFR, PDGFR and src, and a specific docking protein for SHP2. SIRPa has regulatory effects on cellular responses induced by serum, growth factors, insulin, oncogenes, growth hormones and cell adhesion and plays a general role in different physiological and pathological processes.

### VALIDATION IMAGES

---



Sample: Lane 1: Mouse Brain Lysates Lane 2: Mouse Cerebellum Lysates Lane 3: Mouse Spleen Lysates Lane 4: Mouse Placenta Lysates Lane 5: Rat Brain Lysates Lane 6: Rat Cerebellum Lysates Primary: Anti-SIRP Alpha(bs-2708R) at 1/1000 dilution Secondary: IRDye800CW Goat Anti-Rabbit IgG at 1/20000 dilution Predicted band size: 56kDa Observed band size: 56kDa



Blank control(blue): U937 (fixed with 2% paraformaldehyde (10 min)). Primary Antibody:Rabbit Anti- SIRP antibody(bs-2708R), Dilution: 1µg in 100 µL 1X PBS containing 0.5% BSA; Isotype Control Antibody: Rabbit IgG(orange) ,used under the same conditions ); Secondary Antibody: Goat anti-rabbit IgG-PE(white blue), Dilution: 1:200 in 1 X PBS containing 0.5% BSA.