
LYRIC Rabbit pAb

Catalog Number: bs-2231R

Target Protein: LYRIC

Concentration: 1mg/ml

Form: Liquid

Host: Rabbit

Clonality: Polyclonal

Isotype: IgG

Applications: WB (1:500-2000), IHC-P (1:100-500), IHC-F (1:100-500), IF (1:100-500), Flow-Cyt (1ug/Test)

Reactivity: Human (predicted:Mouse, Rat, Pig, Cow, Dog)

Predicted MW: 64 kDa

Subcellular Cell membrane ,Cytoplasm ,Nucleus

Locations:

Entrez Gene: 92140

Swiss Prot: Q86UE4

Source: KLH conjugated synthetic peptide derived from human AEG-1: 131-230/582.

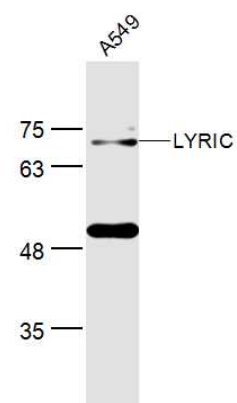
Purification: affinity purified by Protein A

Storage: 0.01M TBS (pH7.4) with 1% BSA, 0.02% Proclin300 and 50% Glycerol.

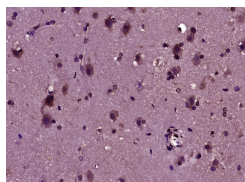
Shipped at 4°C. Store at -20°C for one year. Avoid repeated freeze/thaw cycles.

Background: LYRIC is a type II membrane protein, the precise role of which has yet to be defined. It is expressed in breast and prostate carcinoma and is a potential mediator of lung metastasis. It has also been found in mouse Purkinje neurons and cerebellum. In epithelial cells it is recruited to tight junctions (TJ) during the maturation of the TJ complexes. LYRIC co-localizes with beta-catenin in normal and tumour tissues.

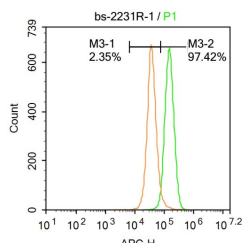
VALIDATION IMAGES



Sample: A549(Human) Lysate at 40 ug Primary: Anti-LYRIC (bs-2231R) at 1/300 dilution Secondary: IRDye800CW Goat Anti-Rabbit IgG at 1/20000 dilution Predicted band size: 64 kD Observed band size: 64 kD



Paraformaldehyde-fixed, paraffin embedded (human brain glioma); Antigen retrieval by boiling in sodium citrate buffer (pH6.0) for 15min; Block endogenous peroxidase by 3% hydrogen peroxide for 20 minutes; Blocking buffer (normal goat serum) at 37°C for 30min; Antibody incubation with (LYRIC) Polyclonal Antibody, Unconjugated (bs-2231R) at 1:400 overnight at 4°C, followed by operating according to SP Kit(Rabbit) (sp-0023) instructions and DAB staining.



Blank control:A431. Primary Antibody (green line): Rabbit Anti-LYRIC antibody (bs-2231R) Dilution: 1µg /10⁶ cells; Isotype Control Antibody (orange line): Rabbit IgG . Secondary Antibody : Goat anti-rabbit IgG-AF647 Dilution: 1µg /test. Protocol The cells were fixed with 4% PFA (10min at room temperature) and then permeabilized with 90% ice-cold methanol for 20 min at -20°C. The cells were then incubated in 5%BSA to block non-specific protein-protein interactions for 30 min at room temperature .Cells stained with Primary Antibody for 30 min at room temperature. The secondary antibody used for 40 min at room temperature. Acquisition of 20,000 events was performed.

PRODUCT SPECIFIC PUBLICATIONS

[IF=2.52] Zheng, Jiasheng, et al. "Astrocyte elevated gene-1 (AEG-1) shRNA sensitizes Huaier polysaccharide (HP)-induced anti-metastatic potency via inactivating downstream P13K/Akt pathway as well as augmenting cell-mediated immune response." *Tumor Biology* (2013): 1-6. WB ; ="Human" . 24375254

[IF=2.11] Zhang, Chun, et al. "MTDH/AEG-1-based DNA vaccine suppresses metastasis and enhances chemosensitivity to paclitaxel in pelvic lymph node metastasis." *Biomedicine & Pharmacotherapy* (2015). IHC ; ="Mouse" . 25776504

[IF=1.37] Guo, Feng, et al. "Astrocyte elevated gene-1 overexpression in histologically favorable Wilms tumor is related to poor prognosis." *Journal of Pediatric Urology* (2013). Other ; ="Human" . 24119914

[IF=0] Guo, Jia, et al. "AEG-1 expression correlates with CD133 and PPP6c levels in human glioma tissues." *The Journal of Biomedical Research* (2014). IHC ; ="Human" . 25332711