

**bs-2516R****[ Primary Antibody ]****GTSE1 Rabbit pAb****Bioss**  
**ANTIBODIES**

www.bioss.com.cn

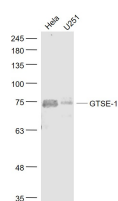
sales@bioss.com.cn

techsupport@bioss.com.cn

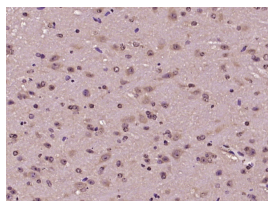
400-901-9800

**— DATASHEET —**

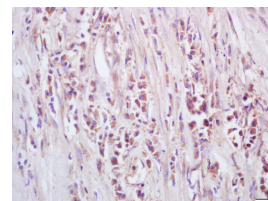
<b>Host:</b> Rabbit <b>Clonality:</b> Polyclonal <b>GeneID:</b> 51512 <b>Target:</b> GTSE1 <b>Immunogen:</b> KLH conjugated synthetic peptide derived from human GTSE1: 651-739/739. <b>Purification:</b> affinity purified by Protein A <b>Concentration:</b> 1mg/ml <b>Storage:</b> 0.01M TBS (pH7.4) with 1% BSA, 0.02% Proclin300 and 50% Glycerol. Shipped at 4°C. Store at -20°C for one year. Avoid repeated freeze/thaw cycles. <b>Background:</b> The protein encoded by this gene is only expressed in the S and G2 phases of the cell cycle, where it colocalizes with cytoplasmic tubulin and microtubules. In response to DNA damage, the encoded protein accumulates in the nucleus and binds the tumor suppressor protein p53, shuttling it out of the nucleus and repressing its ability to induce apoptosis. [provided by RefSeq, Jul 2008]	<b>Isotype:</b> IgG <b>SWISS:</b> Q9NYZ3	<b>Applications:</b> <b>WB</b> (1:500-2000) <b>IHC-P</b> (1:100-500) <b>IHC-F</b> (1:100-500) <b>IF</b> (1:100-500) <b>Reactivity:</b> Human, Mouse (predicted: Rat, Pig, Cow, Chicken) <b>Predicted MW.:</b> 77 kDa <b>Subcellular Location:</b> Cytoplasm
---	---	--

**— VALIDATION IMAGES —**

Sample: HeLa(Human) Cell Lysate at 30 ug  
U251(Human) Cell Lysate at 30 ug Primary: Anti-GTSE-1 (bs-2516R) at 1/1000 dilution Secondary: IRDye800CW Goat Anti-Rabbit IgG at 1/20000 dilution Predicted band size: 77 kD Observed band size: 75 kD



Paraformaldehyde-fixed, paraffin embedded (mouse brain tissue); Antigen retrieval by boiling in sodium citrate buffer (pH6.0) for 15min; Block endogenous peroxidase by 3% hydrogen peroxide for 20 minutes; Blocking buffer (normal goat serum) at 37°C for 30min; Antibody incubation with (GTSE-1) Polyclonal Antibody, Unconjugated (bs-2516R) at 1:400 overnight at 4°C, followed by operating according to SP Kit(Rabbit) (sp-0023) instructions and DAB staining.



Tissue/cell: Human lung cancer; 4% Paraformaldehyde-fixed and paraffin-embedded; Antigen retrieval: citrate buffer (0.01M, pH 6.0), Boiling bathing for 15min; Block endogenous peroxidase by 3% Hydrogen peroxide for 30min; Blocking buffer (normal goat serum, C-0005) at 37°C for 20 min; Incubation: Anti-GTSE-1 Polyclonal Antibody, Unconjugated(bs-2516R) 1:200, overnight at 4°C, followed by conjugation to the secondary antibody(SP-0023) and DAB(C-0010) staining

**— SELECTED CITATIONS —**

- **[IF=2.5]** Maram El-Hussieny. et al. The Overexpression of NUSAP1 and GTSE1 Could Predict An Unfavourable Prognosis and Shorter Disease Free Survival in ccRenal Cell Carcinoma. Asian Pacific Journal of Cancer Prevention. 2024 Jul 1;25(7):2551-2559. IHC ;Human. 3906859