

bs-5439R**[Primary Antibody]****phospho-MAP4 (Ser1046) Rabbit pAb****BioSS**
ANTIBODIES

www.bioss.com.cn

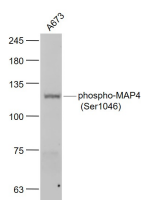
sales@bioss.com.cn

techsupport@bioss.com.cn

400-901-9800

— DATASHEET —

Host: Rabbit	Isotype: IgG	Applications: WB (1:500-2000)
Clonality: Polyclonal		
GeneID: 17758	SWISS: P27546	
Target: phospho-MAP4 (Ser1046)		
Immunogen: KLH conjugated synthesised phosphopeptide derived from mouse MAP4 around the phosphorylation site of Ser1046: VG(p-S)LD.		
Purification: affinity purified by Protein A		Reactivity: Human (predicted: Mouse, Rat, Rabbit, Pig, Cow, Chicken, Dog)
Concentration: 1mg/ml		Predicted MW.: 117 kDa
Storage: 0.01M TBS (pH7.4) with 1% BSA, 0.02% Proclin300 and 50% Glycerol. Shipped at 4°C. Store at -20°C for one year. Avoid repeated freeze/thaw cycles.		Subcellular Location: Cytoplasm
Background: The MAP4 (Microtubule associated protein 4) is a non neuronal microtubule associated protein. It promotes microtubule assembly. The phosphorylation of the Pro rich region in the C-terminus negatively regulates MAP4 activity to promote microtubule assembly.		

— VALIDATION IMAGES —

Sample: A673(Human) Cell Lysate at 30 ug
Primary: Anti- phospho-MAP4 (Ser1046)
(bs-5439R) at 1/1000 dilution Secondary:
IRDye800CW Goat Anti-Rabbit IgG at 1/20000
dilution Predicted band size: 117 kD Observed
band size: 117 kD