

bs-5468R**[Primary Antibody]****phospho-MAP4 (Ser1073) Rabbit pAb****Bioss**
ANTIBODIES

www.bioss.com.cn

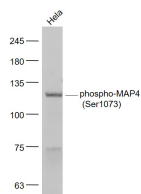
sales@bioss.com.cn

techsupport@bioss.com.cn

400-901-9800

— DATASHEET —

| | | |
|---|----------------------|--|
| Host: Rabbit | Isotype: IgG | Applications: WB (1:500-2000) |
| Clonality: Polyclonal | | Reactivity: Human (predicted: Mouse, Rat, Rabbit, Pig, Cow, Chicken, Dog) |
| GeneID: 4134 | SWISS: P27816 | |
| Target: MAP4 (Ser1073) | | Predicted MW.: 121 kDa |
| Immunogen: KLH conjugated Synthesised phosphopeptide derived from human MAP4 around the phosphorylation site of Ser1073: VG(p-S)LD. | | Subcellular Location: Cytoplasm |
| Purification: affinity purified by Protein A | | |
| Concentration: 1mg/ml | | |
| Storage: 0.01M TBS (pH7.4) with 1% BSA, 0.02% Proclin300 and 50% Glycerol. Shipped at 4°C. Store at -20°C for one year. Avoid repeated freeze/thaw cycles. | | |
| Background: The MAP4 (Microtubule associated protein 4) is a non neuronal microtubule associated protein. It promotes microtubule assembly. The phosphorylation of the Pro rich region in the C-terminus negatively regulates MAP4 activity to promote microtubule assembly. | | |

— VALIDATION IMAGES —

Sample: HeLa(Human) Cell Lysate at 30 ug
Primary: Anti- phospho-MAP4 (Ser1073)
(bs-5468R) at 1/1000 dilution Secondary:
IRDye800CW Goat Anti-Rabbit IgG at 1/20000
dilution Predicted band size: 121 kD Observed
band size: 121 kD