

**bs-2696R****[ Primary Antibody ]****BioSS**  
**ANTIBODIES**

www.bioss.com.cn

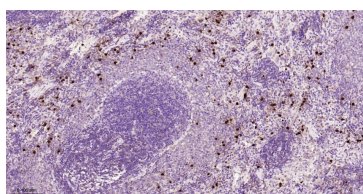
sales@bioss.com.cn

techsupport@bioss.com.cn

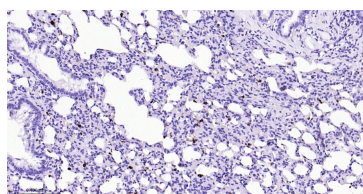
400-901-9800

**S100-A8 / MRP8 Rabbit pAb****— DATASHEET —**

<b>Host:</b> Rabbit <b>Clonality:</b> Polyclonal <b>GeneID:</b> 20201 <b>Target:</b> S100-A8 / MRP8 <b>Immunogen:</b> KLH conjugated synthetic peptide derived from mouse S100A8: 25-89/89. <b>Purification:</b> affinity purified by Protein A <b>Concentration:</b> 1mg/ml <b>Storage:</b> 0.01M TBS (pH7.4) with 1% BSA, 0.02% Proclin300 and 50% Glycerol. Shipped at 4°C. Store at -20°C for one year. Avoid repeated freeze/thaw cycles. <b>Background:</b> The protein encoded by this gene is a member of the S100 family of proteins containing 2 EF-hand calcium-binding motifs. S100 proteins are localized in the cytoplasm and/or nucleus of a wide range of cells, and involved in the regulation of a number of cellular processes such as cell cycle progression and differentiation. S100 genes include at least 13 members which are located as a cluster on chromosome 1q21. This protein may function in the inhibition of casein kinase and as a cytokine. Altered expression of this protein is associated with the disease cystic fibrosis. [provided by RefSeq].	<b>Isotype:</b> IgG <b>SWISS:</b> P27005 <b>Applications:</b> <b>WB</b> (1:500-1:2000) <b>IHC-P</b> (1:100-1:500) <b>IHC-F</b> (1:100-1:500) <b>IF</b> (1:100-1:500) <b>IP</b> (1:20-1:50) <b>Reactivity:</b> Human, Mouse, Rat  <b>Predicted MW.:</b> 10 kDa <b>Subcellular Location:</b> Secreted ,Cell membrane ,Cytoplasm
---	---

**— VALIDATION IMAGES —**

Paraformaldehyde-fixed, paraffin embedded Rat Spleen; Antigen retrieval by boiling in sodium citrate buffer (pH6.0) for 15 min; Antibody incubation with S100-A8 / MRP8 Polyclonal Antibody, Unconjugated (bs-2696R) at 1:200 overnight at 4°C, followed by conjugation to the bs-0295G-HRP and DAB (C-0010) staining.



Paraformaldehyde-fixed, paraffin embedded Rat Lung; Antigen retrieval by boiling in sodium citrate buffer (pH6.0) for 15 min; Antibody incubation with S100-A8 / MRP8 Polyclonal Antibody, Unconjugated (bs-2696R) at 1:200 overnight at 4°C, followed by conjugation to the bs-0295G-HRP and DAB (C-0010) staining.

**— SELECTED CITATIONS —**

- **[IF=38.49]** Nguyen, Khoa D., et al. "Circadian gene Bmal1 regulates diurnal oscillations of Ly6Chi inflammatory monocytes." *Science* 341.6153 (2013): 1483-1488. FCM ;Mouse. 23970558
- **[IF=19]** Ziyang Wang. et al. Inhalable Chemotactic Liposome for Targeted Modulation of Pulmonary Pre-Metastatic Niche. *ADV FUNCT MATER.* 2025 Jan;;2419583 IF ;Mouse. 10.1002/adfm.202419583
- **[IF=18.187]** Peng, Liao. et al. Integrating single-cell RNA sequencing with spatial transcriptomics reveals immune landscape for interstitial cystitis. *SIGNAL TRANSDUCT TAR.* 2022 May;7(1):1-13 IF ;Human. 35589692
- **[IF=16.6]** Zhou Minglu. et al. Cell surface patching via CXCR4-targeted nanothreads for cancer metastasis inhibition. *NAT COMMUN.* 2024 Mar;15(1):1-21 IF ;Mouse. 38553476

Important Note: This product as supplied is intended for research use only, not for use in human, therapeutic or diagnostic applications.

- **[IF=15.621]** Feng B et al. Enhancing Triple Negative Breast Cancer Immunotherapy by ICG - Templated Self - Assembly of Paclitaxel Nanoparticles. Advanced Functional Materials,2019 1906605. FCM,ICC ;Mouse.  
doi:10.1002/adfm.201906605