

bs-2077R**[Primary Antibody]****AMPD1 Rabbit pAb****BioSS**
ANTIBODIES

www.bioss.com.cn

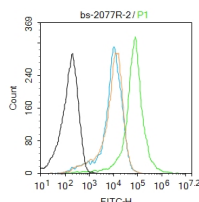
sales@bioss.com.cn

techsupport@bioss.com.cn

400-901-9800

DATASHEET

Host: Rabbit Clonality: Polyclonal GeneID: 229665 Target: AMPD1 Immunogen: KLH conjugated synthetic peptide derived from mouse AMP deaminase 1: 101-200/745. Purification: affinity purified by Protein A Concentration: 1mg/ml Storage: 0.01M TBS (pH7.4) with 1% BSA, 0.02% Proclin300 and 50% Glycerol. Shipped at 4°C. Store at -20°C for one year. Avoid repeated freeze/thaw cycles. Background: AMP deaminase (AMPD) is an allosteric enzyme that plays a critical role in energy metabolism. There are three functional isoforms of AMPD. AMPD1 is the skeletal muscle-specific isoform M located in type II muscle fibers, neuromuscular junctions and in capillaries. Defects in AMPD1 are the cause of adenosine monophosphate deaminase deficiency muscle type (AMPDDM). AMPDDM is a metabolic disorder resulting in exercise-related myopathy. It is characterized by exercise-induced muscle aches, cramps, and early fatigue.	Isotype: IgG SWISS: Q3V1D3	Applications: Flow-Cyt (2ug/Test) Reactivity: Mouse (predicted: Human, Rat, Sheep, Cow, Dog, Horse) Predicted MW.: 86 kDa Subcellular Location: Cytoplasm
--	---	--

VALIDATION IMAGES

Blank control: Mouse spleen. Primary Antibody (green line): Rabbit Anti-AMPD1 antibody (bs-2077R) Dilution: 2µg / 10⁶ cells; Isotype Control Antibody (orange line): Rabbit IgG . Secondary Antibody : Goat anti-rabbit IgG-AF488 Dilution: 1µg /test. Protocol The cells were fixed with 70% ethanol (10min at room temperature) and then were incubated in 5%BSA to block non-specific protein-protein interactions for 30 min at room temperature .Cells stained with Primary Antibody for 30 min at room temperature. The secondary antibody used for 40 min at room temperature. Acquisition of 20,000 events was performed.