

bs-11570R**[Primary Antibody]****KIBRA Rabbit pAb****Bioss**
ANTIBODIES

www.bioss.com.cn

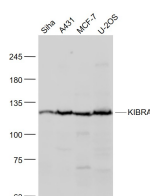
sales@bioss.com.cn

techsupport@bioss.com.cn

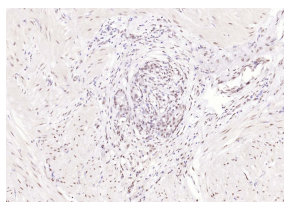
400-901-9800

— DATASHEET —

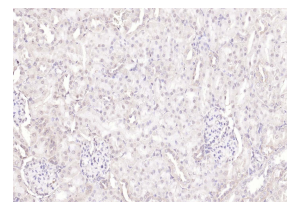
Host: Rabbit	Isotype: IgG	Applications: WB (1:500-2000) IHC-P (1:100-500) IHC-F (1:100-500) IF (1:100-500) Reactivity: Human, Mouse, Rat (predicted: Rabbit, Sheep, Cow, Dog) Predicted MW.: 125 kDa Subcellular Location: Cell membrane ,Cytoplasm ,Nucleus
Clonality: Polyclonal		
GeneID: 23286	SWISS: Q8IX03	
Target: KIBRA		
Immunogen: KLH conjugated synthetic peptide derived from human KIBRA: 351-450/1113.		
Purification: affinity purified by Protein A		
Concentration: 1mg/ml		
Storage: 0.01M TBS (pH7.4) with 1% BSA, 0.02% Proclin300 and 50% Glycerol. Shipped at 4°C. Store at -20°C for one year. Avoid repeated freeze/thaw cycles.		
Background: KIBRA is a 1,113 amino acid protein that localizes to the cytoplasm and contains one C2 domain and two WW domains. Expressed in colon, brain, kidney and heart tissue, KIBRA is thought to interact with dendrin and, via this interaction, may play a role in collagen-induced signaling. Additionally, KIBRA, which exists as multiple alternatively spliced isoforms, is involved in memory performance and in the pathogenesis of Alzheimer's disease. The gene encoding KIBRA maps to human chromosome 5, which contains 181 million base pairs and comprises nearly 6% of the human genome. Deletion of the p arm of chromosome 5 leads to Cri du chat syndrome, while deletion of the q arm or of chromosome 5 altogether is common in therapy-related acute myelogenous leukemias and myelodysplastic syndrome.		

— VALIDATION IMAGES —

Sample: SiHa(Human) Cell Lysate at 30 ug
A431(Human) Cell Lysate at 30 ug
MCF-7(Human) Cell Lysate at 30 ug
U-2OS(Human) Cell Lysate at 30 ug
Primary: Anti- KIBRA (bs-11570R) at 1/1000 dilution
Secondary: IRDye800CW Goat Anti-Rabbit IgG at 1/20000 dilution
Predicted band size: 125 kD
Observed band size: 125 kD



Paraformaldehyde-fixed, paraffin embedded (human gastric carcinoma); Antigen retrieval by boiling in sodium citrate buffer (pH6.0) for 15min; Block endogenous peroxidase by 3% hydrogen peroxide for 20 minutes; Blocking buffer (normal goat serum) at 37°C for 30min; Antibody incubation with (KIBRA) Polyclonal Antibody, Unconjugated (bs-11570R) at 1:200 overnight at 4°C, followed by operating according to SP Kit(Rabbit) (sp-0023) instructions and DAB staining.



Paraformaldehyde-fixed, paraffin embedded (rat kidney); Antigen retrieval by boiling in sodium citrate buffer (pH6.0) for 15min; Block endogenous peroxidase by 3% hydrogen peroxide for 20 minutes; Blocking buffer (normal goat serum) at 37°C for 30min; Antibody incubation with (KIBRA) Polyclonal Antibody, Unconjugated (bs-11570R) at 1:200 overnight at 4°C, followed by operating according to SP Kit(Rabbit) (sp-0023) instructions and DAB staining.