

bs-1849R**[Primary Antibody]****Midkine Rabbit pAb****Bioss**
ANTIBODIES

www.bioss.com.cn

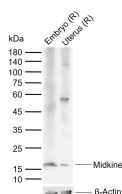
sales@bioss.com.cn

techsupport@bioss.com.cn

400-901-9800

— DATASHEET —

Host: Rabbit	Isotype: IgG	Applications: WB (1:500-2000)
Clonality: Polyclonal		Reactivity: Human, Rat (predicted: Mouse, Cow, Dog, Horse, Fruit Fly)
GeneID: 4192	SWISS: P21741	Predicted MW.: 13.4 kDa
Target: Midkine		Subcellular Location: Secreted
Immunogen: KLH conjugated synthetic peptide derived from human Midkine: 23-100/140.		
Purification: affinity purified by Protein A		
Concentration: 1mg/ml		
Storage: 0.01M TBS (pH7.4) with 1% BSA, 0.02% Proclin300 and 50% Glycerol. Shipped at 4°C. Store at -20°C for one year. Avoid repeated freeze/thaw cycles.		
Background: Midkine exhibits neurite outgrowth-promoting activity and may play a role in nervous system development and/or maintenance. Its expression is predominant only for a short period from approximately one-half to two-thirds of the way through gestation; before and after that, it is barely detectable. Midkine was first found in differentiating mouse teratocarcinoma cells. It has neurotrophic activities and is mitogenic to certain, but not to all, fibroblast cell lines.		

— VALIDATION IMAGES —

Sample: Lane 1: Rat Embryo tissue lysates Lane
2: Rat Uterus tissue lysates Primary: Anti-Midkine
(bs-1849R) at 1/1000 dilution Secondary:
IRDye800CW Goat Anti-Rabbit IgG at 1/20000
dilution Predicted band size: 13.4 kDa Observed
band size: 16 kDa