

**bs-1846R****[ Primary Antibody ]****LRIG3 Rabbit pAb****Bioss**  
ANTIBODIES

www.bioss.com.cn

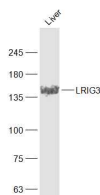
sales@bioss.com.cn

techsupport@bioss.com.cn

400-901-9800

**— DATASHEET —**

<b>Host:</b> Rabbit	<b>Isotype:</b> IgG	<b>Applications:</b> WB (1:500-2000)
<b>Clonality:</b> Polyclonal		<b>Reactivity:</b> Mouse (predicted: Human, Rat, Pig, Cow, Chicken, Dog, Horse)
<b>GeneID:</b> 121227	<b>SWISS:</b> Q6UXM1	<b>Predicted MW.:</b> 121 kDa
<b>Target:</b> LRIG3		<b>Subcellular Location:</b> Cell membrane ,Cytoplasm
<b>Immunogen:</b> KLH conjugated synthetic peptide derived from human LRIG3: 551-650/1119.		
<b>Purification:</b> affinity purified by Protein A		
<b>Concentration:</b> 1mg/ml		
<b>Storage:</b> 0.01M TBS (pH7.4) with 1% BSA, 0.02% Proclin300 and 50% Glycerol. Shipped at 4°C. Store at -20°C for one year. Avoid repeated freeze/thaw cycles.		
<b>Background:</b> LRIG3 is predicted to be a 1117 amino acid single pass transmembrane protein with 15 leucine rich repeats and 3 Ig domains in the extracellular region, and a short, novel cytoplasmic tail with no known motifs. It is believed that LRIG3 influences lateral ear canal morphogenesis. Expression and sub-cellular localization of LRIG3 might be of importance in the pathogenesis and prognosis of astrocytic tumors.		

**— VALIDATION IMAGES —**

Sample: Liver (Mouse) Lysate at 40 ug Primary:  
Anti-LRIG3 (bs-1846R) at 1/1000 dilution  
Secondary: IRDye800CW Goat Anti-Rabbit IgG at  
1/20000 dilution Predicted band size: 121 kD  
Observed band size: 156 kD