

bs-1845R**[Primary Antibody]****LRIG2 Rabbit pAb****Bioss**
ANTIBODIES

www.bioss.com.cn

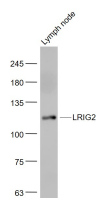
sales@bioss.com.cn

techsupport@bioss.com.cn

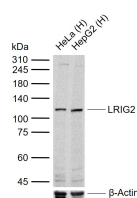
400-901-9800

— DATASHEET —

Host: Rabbit	Isotype: IgG	Applications: WB (1:500-2000)
Clonality: Polyclonal		Reactivity: Human, Mouse (predicted: Rat, Rabbit, Pig, Cow, Dog, GuineaPig, Horse)
GeneID: 9860	SWISS: Q94898	Predicted MW.: 117 kDa
Target: LRIG2		Subcellular Location: Cell membrane
Immunogen: KLH conjugated synthetic peptide derived from human LRIG2: 701-800/1065.		
Purification: affinity purified by Protein A		
Concentration: 1mg/ml		
Storage: 0.01M TBS (pH7.4) with 1% BSA, 0.02% Proclin300 and 50% Glycerol. Shipped at 4°C. Store at -20°C for one year. Avoid repeated freeze/thaw cycles.		
Background: LRIG2 is produced in all human glioma cell lines and localizes to perinuclear compartments, cytoplasmic compartments and the cell surface. It acts as a negative feedback regulator of signaling through enhanced receptor ubiquitination and accelerated intracellular degradation. LRIG2 may function as a tumour suppressor since it downregulates the expression of EGF and the related proteins ErbB-2, ErbB-3 and ErbB-4, which all inhibit cancer cells from growth, migration and invasion.		

— VALIDATION IMAGES —

Sample: Lymph node (Mouse) Lysate at 40 ug
Primary: Anti- LRIG2 (bs-1845R) at 1/1000
dilution Secondary: IRDye800CW Goat Anti-
Rabbit IgG at 1/20000 dilution Predicted band
size: 117 kD Observed band size: 117 kD



Sample: Lane 1: Human HeLa cell lysates Lane 2:
Human HepG2 cell lysates Primary: Anti-LRIG2
(bs-1845R) at 1/1000 dilution Secondary:
IRDye800CW Goat Anti-Rabbit IgG at 1/20000
dilution Predicted band size: 117 kDa Observed
band size: 117 kDa