

bs-17688R**[Primary Antibody]****MMRN2 Rabbit pAb****BioSS**
ANTIBODIES

www.bioss.com.cn

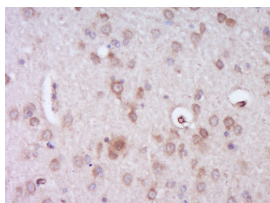
sales@bioss.com.cn

techsupport@bioss.com.cn

400-901-9800

— DATASHEET —

Host: Rabbit	Isotype: IgG	Applications: IHC-P (1:100-500) IHC-F (1:100-500) IF (1:100-500) Reactivity: Rat (predicted: Human, Mouse, Dog, Horse) Predicted MW.: 104 kDa Subcellular Location: Secreted
Clonality: Polyclonal		
GeneID: 79812	SWISS: Q9H8L6	
Target: MMRN2		
Immunogen: KLH conjugated synthetic peptide derived from human MMRN2: 361-460/949.		
Purification: affinity purified by Protein A		
Concentration: 1mg/ml		
Storage: 0.01M TBS (pH7.4) with 1% BSA, 0.02% Proclin300 and 50% Glycerol. Shipped at 4°C. Store at -20°C for one year. Avoid repeated freeze/thaw cycles.		
Background: This gene encodes a protein belonging to the member of elastin microfibril interface-located (EMILIN) protein family. This family member is an extracellular matrix glycoprotein that can interfere with tumor angiogenesis and growth. It serves as a transforming growth factor beta antagonist and can interfere with the VEGF-A/VEGFR2 pathway. A related pseudogene has been identified on chromosome 6. [provided by RefSeq, Aug 2012]		

— VALIDATION IMAGES —

Paraformaldehyde-fixed, paraffin embedded (Rat brain); Antigen retrieval by boiling in sodium citrate buffer (pH6.0) for 15min; Block endogenous peroxidase by 3% hydrogen peroxide for 20 minutes; Blocking buffer (normal goat serum) at 37°C for 30min; Antibody incubation with (MMRN2) Polyclonal Antibody, Unconjugated (bs-17688R) at 1:400 overnight at 4°C, followed by operating according to SP Kit(Rabbit) (sp-0023) instructions and DAB staining.