

bs-17683R**[Primary Antibody]****SPOCK3 Rabbit pAb****BioSS**
ANTIBODIES

www.bioss.com.cn

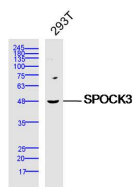
sales@bioss.com.cn

techsupport@bioss.com.cn

400-901-9800

— DATASHEET —

Host: Rabbit	Isotype: IgG	Applications: WB (1:500-2000)
Clonality: Polyclonal		Reactivity: Human (predicted: Mouse, Rat, Dog)
GeneID: 50859	SWISS: Q9BQ16	
Target: SPOCK3		Predicted MW.: 49 kDa
Immunogen: KLH conjugated synthetic peptide derived from human SPOCK3: 181-280/436.		Subcellular Location: Secreted
Purification: affinity purified by Protein A		
Concentration: 1mg/ml		
Storage: 0.01M TBS (pH7.4) with 1% BSA, 0.02% Proclin300 and 50% Glycerol. Shipped at 4°C. Store at -20°C for one year. Avoid repeated freeze/thaw cycles.		
Background: This gene encodes a member of a novel family of calcium-binding proteoglycan proteins that contain thyroglobulin type-1 and Kazal-like domains. The encoded protein and may play a role in adult T-cell leukemia by inhibiting the activity of membrane-type matrix metalloproteinases. Alternatively spliced transcript variants encoding multiple isoforms have been observed for this gene. [provided by RefSeq, Oct 2011]		

— VALIDATION IMAGES —

Sample: 293T Cell (Human) Lysate at 40 ug
Primary: Anti-SPOCK3 (bs-17683R) at 1/300 dilution
Secondary: IRDye800CW Goat Anti-Rabbit IgG at 1/20000 dilution
Predicted band size: 49 kD
Observed band size: 48 kD