

bs-17680R**[Primary Antibody]****phospho-SF1 (Ser82) Rabbit pAb****Bioss**
ANTIBODIES

www.bioss.com.cn

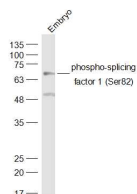
sales@bioss.com.cn

techsupport@bioss.com.cn

400-901-9800

— DATASHEET —

Host: Rabbit	Isotype: IgG	Applications: WB (1:500-2000)
Clonality: Polyclonal		
GeneID: 7536	SWISS: Q15637	
Target: phospho-SF1 (Ser82)		
Immunogen: KLH conjugated synthesised phosphopeptide derived from human SF1 around the phosphorylation site of Ser82: SP(p-S)PE.		
Purification: affinity purified by Protein A		Reactivity: Mouse (predicted: Human, Rat, Rabbit, Pig, Sheep, Cow, Horse)
Concentration: 1mg/ml		
Storage: 0.01M TBS (pH7.4) with 1% BSA, 0.02% Proclin300 and 50% Glycerol. Shipped at 4°C. Store at -20°C for one year. Avoid repeated freeze/thaw cycles.		
Background: This gene encodes a nuclear pre-mRNA splicing factor. The encoded protein specifically recognizes the intron branch point sequence and is required for the early stages of spliceosome assembly. Alternate splicing results in multiple transcript variants. [provided by RefSeq, May 2010]		
		Subcellular Location: Nucleus

— VALIDATION IMAGES —

Sample: Embryo (Mouse) Lysate at 40 ug
Primary: Anti-phospho-splicing factor 1 (Ser82)
(bs-17680R) at 1/300 dilution Secondary:
IRDye800CW Goat Anti-Rabbit IgG at 1/20000
dilution Predicted band size: 68 kD Observed
band size: 68 kD