

bs-6261R**[Primary Antibody]****NEK3 Rabbit pAb****BioSS**
ANTIBODIES

www.bioss.com.cn

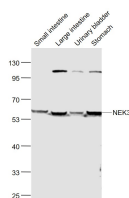
sales@bioss.com.cn

techsupport@bioss.com.cn

400-901-9800

— DATASHEET —

Host: Rabbit	Isotype: IgG	Applications: WB (1:500-2000)
Clonality: Polyclonal		Reactivity: Mouse (predicted: Human, Rat, Rabbit, Pig, Cow, Horse)
GeneID: 4752	SWISS: P51956	Predicted MW.: 58 kDa
Target: NEK3		Subcellular Location: Cytoplasm
Immunogen: KLH conjugated synthetic peptide derived from human NEK3: 165-265/506.		
Purification: affinity purified by Protein A		
Concentration: 1mg/ml		
Storage: 0.01M TBS (pH7.4) with 1% BSA, 0.02% Proclin300 and 50% Glycerol. Shipped at 4°C. Store at -20°C for one year. Avoid repeated freeze/thaw cycles.		
Background: This gene encodes a member of the NimA (never in mitosis A) family of serine/threonine protein kinases. The encoded protein differs from other NimA family members in that it is not cell cycle regulated and is found primarily in the cytoplasm. The kinase is activated by prolactin stimulation, leading to phosphorylation of VAV2 guanine nucleotide exchange factor, paxillin, and activation of the RAC1 GTPase. Multiple transcript variants encoding different isoforms have been found for this gene.[provided by RefSeq, Mar2009].		

— VALIDATION IMAGES —

Sample: Small intestine (Mouse) Lysate at 40 ug
Large intestine (Mouse) Lysate at 40 ug Urinary
bladder (Mouse) Lysate at 40 ug Stomach
(Mouse) Lysate at 40 ug Primary: Anti-NEK3
(bs-6261R) at 1/1000 dilution Secondary:
IRDye800CW Goat Anti-Rabbit IgG at 1/20000
dilution Predicted band size: 58 kD Observed
band size: 58 kD