

**bs-6266R****[ Primary Antibody ]****BioSS**  
ANTIBODIES

www.bioss.com.cn

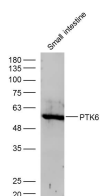
sales@bioss.com.cn

techsupport@bioss.com.cn

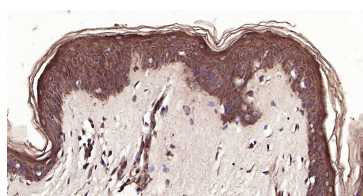
400-901-9800

**PTK6 Rabbit pAb****— DATASHEET —**

<b>Host:</b> Rabbit <b>Clonality:</b> Polyclonal <b>GeneID:</b> 5753 <b>Target:</b> PTK6 <b>Immunogen:</b> KLH conjugated synthetic peptide derived from human Brk/PTK6: 201-300/451. <b>Purification:</b> affinity purified by Protein A <b>Concentration:</b> 1mg/ml <b>Storage:</b> 0.01M TBS (pH7.4) with 1% BSA, 0.02% Proclin300 and 50% Glycerol. Shipped at 4°C. Store at -20°C for one year. Avoid repeated freeze/thaw cycles. <b>Background:</b> This protein encoded is a cytoplasmic nonreceptor protein kinase which may function as an intracellular signal transducer in epithelial tissues. Overexpression of this gene in mammary epithelial cells leads to sensitization of the cells to epidermal growth factor and results in a partially transformed phenotype. Expression of this gene has been detected at low levels in some breast tumors but not in normal breast tissue. Its presence in the nucleus appears to be linked to suppression of tumor progression. The encoded protein has been shown to undergo autophosphorylation.	<b>Isotype:</b> IgG <b>SWISS:</b> Q13882	<b>Applications:</b> <b>WB</b> (1:500-2000) <b>IHC-P</b> (1:100-500) <b>IHC-F</b> (1:100-500) <b>IF</b> (1:100-500) <b>Reactivity:</b> Human, Mouse (predicted: Rat, Sheep, Cow) <b>Predicted MW.:</b> 52 kDa <b>Subcellular Location:</b> Cell membrane ,Cytoplasm ,Nucleus
--	---	---

**— VALIDATION IMAGES —**

Sample: Small intestine (Mouse) Lysate at 40 ug  
Primary: Anti- PTK6 (bs-6266R) at 1/300 dilution  
Secondary: IRDye800CW Goat Anti-Rabbit IgG at 1/20000 dilution Predicted band size: 52 kD  
Observed band size: 52 kD



Paraformaldehyde-fixed, paraffin embedded Human Skin ; Antigen retrieval by boiling in sodium citrate buffer (pH6.0) for 15 min;  
Antibody incubation with PTK6 Polyclonal Antibody, Unconjugated (bs-6266R) at 1:200 overnight at 4°C, followed by conjugation to the SP Kit (Rabbit, SP-0023) and DAB (C-0010) staining.