

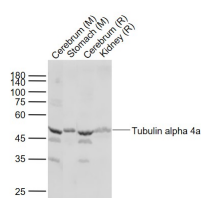
bs-20495R**[Primary Antibody]****Bioss**
ANTIBODIES

www.bioss.com.cn

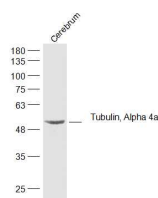
sales@bioss.com.cn

techsupport@bioss.com.cn

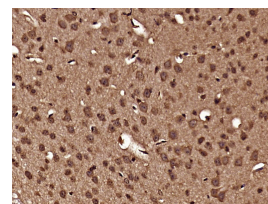
400-901-9800

Tubulin, Alpha 4a Rabbit pAb**— DATASHEET —****Host:** Rabbit**Isotype:** IgG**Clonality:** Polyclonal**GeneID:** 7277**SWISS:** P68366**Target:** Tubulin, Alpha 4a**Immunogen:** KLH conjugated synthetic peptide derived from human Tubulin, Alpha 4a: 41-140/448.**Purification:** affinity purified by Protein A**Concentration:** 1mg/ml**Storage:** Preservative: 0.02% Proclin300, Constituents: 1% BSA, 0.01M PBS, pH7.4.
Shipped at 4°C. Store at -20°C for one year. Avoid repeated freeze/thaw cycles.**Background:** Microtubules of the eukaryotic cytoskeleton perform essential and diverse functions and are composed of a heterodimer of alpha and beta tubulin. The genes encoding these microtubule constituents are part of the tubulin superfamily, which is composed of six distinct families. Genes from the alpha, beta and gamma tubulin families are found in all eukaryotes. The alpha and beta tubulins represent the major components of microtubules, while gamma tubulin plays a critical role in the nucleation of microtubule assembly. There are multiple alpha and beta tubulin genes and they are highly conserved among and between species. This gene encodes an alpha tubulin that is a highly conserved homolog of a rat testis-specific alpha tubulin. Alternatively spliced transcript variants encoding different isoforms have been found for this gene. [provided by RefSeq, Jun 2013]**Applications:** WB (1:500-2000)**IHC-P** (1:100-500)**IHC-F** (1:100-500)**IF** (1:100-500)**Flow-Cyt** (1µg/Test)**Reactivity:** Human, Mouse, Rat
(predicted: Rabbit, Pig, Sheep, Cow, Dog, Horse)**Predicted MW.:** 50 kDa**Subcellular Location:** Cytoplasm**— VALIDATION IMAGES —**

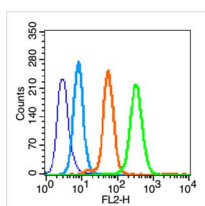
Sample: Lane 1: Cerebrum (Mouse) Lysate at 40 ug
Lane 2: Stomach (Mouse) Lysate at 40 ug
Lane 3: Cerebrum (Rat) Lysate at 40 ug
Lane 4: Kidney (Rat) Lysate at 40 ug
Primary: Anti-Tubulin alpha 4a (bs-20495R) at 1/1000 dilution
Secondary: IRDye800CW Goat Anti-Rabbit IgG at 1/20000 dilution
Predicted band size: 52 kD
Observed band size: 50 kD



Sample: Cerebrum (Mouse) Lysate at 40 ug
Primary: Anti-Tubulin, Alpha 4a (bs-20495R) at 1/300 dilution
Secondary: IRDye800CW Goat Anti-Rabbit IgG at 1/20000 dilution
Predicted band size: 50 kD
Observed band size: 50 kD



Paraformaldehyde-fixed, paraffin embedded (Mouse brain); Antigen retrieval by boiling in sodium citrate buffer (pH6.0) for 15min; Block endogenous peroxidase by 3% hydrogen peroxide for 20 minutes; Blocking buffer (normal goat serum) at 37°C for 30min; Antibody incubation with (Tubulin, Alpha 4a) Polyclonal Antibody, Unconjugated (bs-20495R) at 1:400 overnight at 4°C, followed by operating according to SP Kit(Rabbit) (sp-0023) instructions and DAB staining.



Blank control (blue line): Hep G2 (fixed with 70%)

Important Note: This product as supplied is intended for research use only, not for use in human, therapeutic or diagnostic applications.

ethanol (Overnight at 4°C) and then permeabilized with 0.1% PBS-Tween for 20 min at room temperature). Primary Antibody (green line): Rabbit Anti-Tubulin, Alpha 4a antibody (bs-20495R), Dilution: 0.2µg /10⁶ cells; Isotype Control Antibody (orange line): Rabbit IgG . Secondary Antibody (white blue line): Goat anti-rabbit IgG-PE, Dilution: 1µg /test.