

**bs-20498R****[ Primary Antibody ]****Bioss**  
ANTIBODIES

www.bioss.com.cn

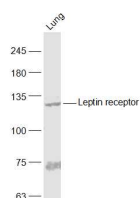
sales@bioss.com.cn

techsupport@bioss.com.cn

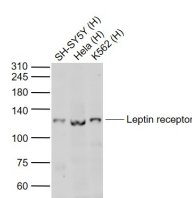
400-901-9800

**Leptin receptor Rabbit pAb****— DATASHEET —**

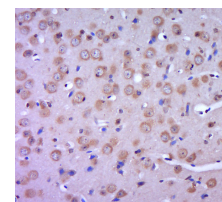
<b>Host:</b> Rabbit	<b>Isotype:</b> IgG	<b>Applications:</b> WB (1:500-2000) <b>IHC-P</b> (1:100-500) <b>IHC-F</b> (1:100-500) <b>IF</b> (1:100-500)  <b>Reactivity:</b> Human, Mouse (predicted: Rat, Pig, Dog, Horse)  <b>Predicted MW.:</b> 103/132 kDa  <b>Subcellular Location:</b> Secreted ,Cell membrane
<b>Clonality:</b> Polyclonal		
<b>GeneID:</b> 3953	<b>SWISS:</b> P48357	
<b>Target:</b> Leptin receptor		
<b>Immunogen:</b> KLH conjugated synthetic peptide derived from human Leptin receptor: 251-350/1165. < Extracellular >		
<b>Purification:</b> affinity purified by Protein A		
<b>Concentration:</b> 1mg/ml		
<b>Storage:</b> Preservative: 0.02% Proclin300, Constituents: 1% BSA, 0.01M PBS, pH7.4. Shipped at 4°C. Store at -20°C for one year. Avoid repeated freeze/thaw cycles.		
<b>Background:</b> The protein encoded by this gene belongs to the gp130 family of cytokine receptors that are known to stimulate gene transcription via activation of cytosolic STAT proteins. This protein is a receptor for leptin (an adipocyte-specific hormone that regulates body weight), and is involved in the regulation of fat metabolism, as well as in a novel hematopoietic pathway that is required for normal lymphopoiesis. Mutations in this gene have been associated with obesity and pituitary dysfunction. Alternatively spliced transcript variants encoding different isoforms have been described for this gene. It is noteworthy that this gene and LEPROT gene (GeneID:54741) share the same promoter and the first 2 exons, however, encode distinct proteins (PMID:9207021).[provided by RefSeq, Nov 2010]		

**— VALIDATION IMAGES —**

Sample: Lung (Mouse) Lysate at 40 ug Primary: Anti-Leptin receptor (bs-20498R) at 1/1000 dilution Secondary: IRDye800CW Goat Anti-Rabbit IgG at 1/20000 dilution Predicted band size: 103/132 kD Observed band size: 132 kD



Sample: Lane 1: SH-SY5Y (Human) Cell Lysate at 30 ug Lane 2: HeLa (Human) Cell Lysate at 30 ug Lane 3: K562 (Human) Cell Lysate at 30 ug Primary: Anti-Leptin receptor (bs-20498R) at 1/1000 dilution Secondary: IRDye800CW Goat Anti-Rabbit IgG at 1/20000 dilution Predicted band size: 103/132 kD Observed band size: 120 kD



Paraformaldehyde-fixed, paraffin embedded (mouse brain tissue); Antigen retrieval by boiling in sodium citrate buffer (pH6.0) for 15min; Block endogenous peroxidase by 3% hydrogen peroxide for 20 minutes; Blocking buffer (normal goat serum) at 37°C for 30min; Antibody incubation with (Leptin receptor) Polyclonal Antibody, Unconjugated (bs-20498R) at 1:400 overnight at 4°C, followed by a conjugated secondary (sp-0023) for 20 minutes and DAB staining.

**— SELECTED CITATIONS —**

- **[IF=5.3]** Xin Cao. et al. Alleviation of temporomandibular joint osteoarthritis by targeting RIPK1-mediated inflammatory signalling. JOURNAL OF CELLULAR AND MOLECULAR MEDICINE. 2023 Aug.; IHC ;Rat. 37643315
- **[IF=1.227]** Ding YY et al. Relationship among porcine lncRNA TCONS\_00010987, miR-323, and LEPR based on dual luciferase reporter gene assays and expression patterns. Asian-Australas J Anim Sci.2019,July 1. WB ;Pig.

Important Note: This product as supplied is intended for research use only, not for use in human, therapeutic or diagnostic applications.

