

bs-8732R**[Primary Antibody]****PIAS1 Rabbit pAb****Bioss**
ANTIBODIES

www.bioss.com.cn

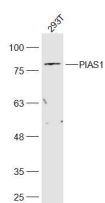
sales@bioss.com.cn

techsupport@bioss.com.cn

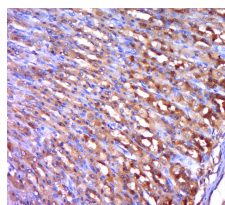
400-901-9800

— DATASHEET —

Host: Rabbit	Isotype: IgG	Applications: WB (1:500-2000) IHC-P (1:100-500) IHC-F (1:100-500) IF (1:100-500) Reactivity: Human, Rat (predicted: Mouse, Rabbit, Pig, Sheep, Cow, Chicken, Dog, Horse) Predicted MW.: 81 kDa Subcellular Location: Cytoplasm ,Nucleus
Clonality: Polyclonal		
GeneID: 8554	SWISS: O75925	
Target: PIAS1		
Immunogen: KLH conjugated synthetic peptide derived from human PIAS1: 501-600/651.		
Purification: affinity purified by Protein A		
Concentration: 1mg/ml		
Storage: Preservative: 0.02% Proclin300, Constituents: 1% BSA, 0.01M PBS, pH7.4. Shipped at 4°C. Store at -20°C for one year. Avoid repeated freeze/thaw cycles.		

— VALIDATION IMAGES —

Sample: 293T(Human) Cell Lysate at 30 ug
Primary: Anti-PIAS1 (bs-8732R) at 1/300 dilution
Secondary: IRDye800CW Goat Anti-Rabbit IgG at
1/20000 dilution Predicted band size: 81 kD
Observed band size: 81 kD



Paraformaldehyde-fixed, paraffin embedded (rat
stomach tissue); Antigen retrieval by boiling in
sodium citrate buffer (pH6.0) for 15min; Block
endogenous peroxidase by 3% hydrogen
peroxide for 20 minutes; Blocking buffer (normal
goat serum) at 37°C for 30min; Antibody
incubation with (PIAS1) Polyclonal Antibody,
Unconjugated (bs-8732R) at 1:400 overnight at
4°C, followed by a conjugated secondary
(sp-0023) for 20 minutes and DAB staining.