

bs-20838R**[Primary Antibody]****LY6E Rabbit pAb****BioSS**
ANTIBODIES

www.bioss.com.cn

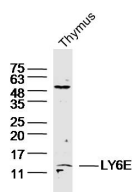
sales@bioss.com.cn

techsupport@bioss.com.cn

400-901-9800

— DATASHEET —

Host: Rabbit	Isotype: IgG	Applications: WB (1:500-2000)
Clonality: Polyclonal		Reactivity: Mouse (predicted: Rat)
GeneID: 17069	SWISS: Q64253	
Target: LY6E		
Immunogen: KLH conjugated synthetic peptide derived from mouse LY6E: 31-80/136.		Predicted MW.: 14 kDa
Purification: affinity purified by Protein A		Subcellular Location: Cell membrane
Concentration: 1mg/ml		
Storage: Preservative: 0.02% Proclin300, Constituents: 1% BSA, 0.01M PBS, pH7.4. Shipped at 4°C. Store at -20°C for one year. Avoid repeated freeze/thaw cycles.		
Background: This gene belongs to the human Ly6 gene family and encodes a glycosylphosphatidyl-inositol (GPI)-anchored cell surface protein. The protein plays an important role in T cell physiology, oncogenesis and immunological regulation. The protein is also involved in modulation of viral infection by coronaviruses, SARS-CoV, MERS-CoV and SARS-CoV-2. [provided by RefSeq, Aug 2021]		

— VALIDATION IMAGES —

Sample:Thymus (Mouse)Lysate at 40 ug Primary:
Anti-LY6E(bs-20838R)at 1/300 dilution
Secondary: IRDye800CW Goat Anti-RabbitIgG at
1/20000 dilution Predicted band size: 14kD
Observed band size: 14kD