

bs-15590R**[Primary Antibody]****BioSS**
ANTIBODIES

www.bioss.com.cn

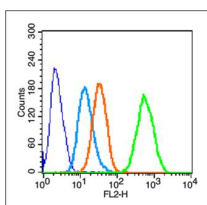
sales@bioss.com.cn

techsupport@bioss.com.cn

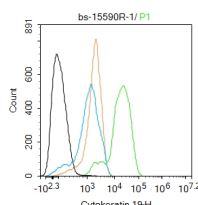
400-901-9800

Cytokeratin 19 Rabbit pAb**DATASHEET**

Host: Rabbit	Isotype: IgG	Applications: Flow-Cyt (1μg/Test)
Clonality: Polyclonal		Reactivity: Human
GeneID: 3880	SWISS: P08727	
Target: Cytokeratin 19		
Immunogen: KLH conjugated synthetic peptide derived from human CK19: 301-400/400.		Predicted MW.: 30 kDa
Purification: affinity purified by Protein A		Subcellular Location: Extracellular matrix ,Cell membrane ,Cytoplasm
Concentration: 1mg/ml		
Storage: 0.01M TBS (pH7.4) with 1% BSA, 0.02% Proclin300 and 50% Glycerol. Shipped at 4°C. Store at -20°C for one year. Avoid repeated freeze/thaw cycles.		
Background: The protein encoded by this gene is a member of the keratin family. The keratins are intermediate filament proteins responsible for the structural integrity of epithelial cells and are subdivided into cytokeratins and hair keratins. The type I cytokeratins consist of acidic proteins which are arranged in pairs of heterotypic keratin chains. Unlike its related family members, this smallest known acidic cytokeratin is not paired with a basic cytokeratin in epithelial cells. It is specifically expressed in the periderm, the transiently superficial layer that envelopes the developing epidermis. The type I cytokeratins are clustered in a region of chromosome 17q12-q21.		

VALIDATION IMAGES

Blank control (blue line): HeLa (fixed with 70% methanol (Overnight at 4°C) and then permeabilized with 90% ice-cold methanol for 20 min at -20°C). Primary Antibody (green line): Rabbit Anti-CK19 antibody (bs-15590R), Dilution: 0.2μg /10⁶ cells; Isotype Control Antibody (orange line): Rabbit IgG . Secondary Antibody (white blue line): Goat anti-rabbit IgG-PE, Dilution: 1μg /test.



Blank control: MCF-7. Primary Antibody (green line): Rabbit Anti-Cytokeratin 19 antibody (bs-15590R) Dilution: 1μg/Test; Secondary Antibody : Goat anti-rabbit IgG-FITC Dilution: 0.5μg/Test. Protocol The cells were fixed with 4% PFA (10min at room temperature) and then permeabilized with 90% ice-cold methanol for 20 min at -20°C. The cells were then incubated in 5% BSA to block non-specific protein-protein interactions for 30 min at room temperature .Cells stained with Primary Antibody for 30 min at room temperature. The secondary antibody used for 40 min at room temperature. Acquisition of 20,000 events was performed.

SELECTED CITATIONS

- **[IF=4.6]** Dou Zhimin. et al. CBX7 silencing promoted liver regeneration by interacting with BMI1 and activating the Nrf2/ARE signaling pathway. SCI REP-UK. 2024 May;14(1):1-12 IHC ;Mouse. 38744845
- **[IF=1.769]** Zhang et al. Identification of cellular proteome using two-dimensional difference gel electrophoresis in ST

Important Note: This product as supplied is intended for research use only, not for use in human, therapeutic or diagnostic applications.

cells infected with transmissible gastroenteritis coronavirus. (2013) Proteome.Sci. 11:31 WB ;Human. 23855489