

bsm-33151M**[Primary Antibody]****Cleaved PARP1 Mouse mAb****BioSS**
ANTIBODIES

www.bioss.com.cn

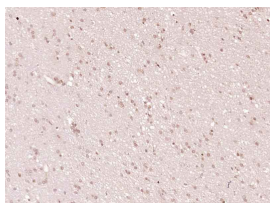
sales@bioss.com.cn

techsupport@bioss.com.cn

400-901-9800

— DATASHEET —

Host: Mouse Clonality: Monoclonal GeneID: 142 Target: Cleaved PARP1 Purification: affinity purified by Protein G Concentration: 1mg/ml Storage: Size : 50ul/100ul/200ul 0.01M TBS (pH7.4) with 1% BSA, 0.02% Proclin300 and 50% Glycerol. Size : 200ug (PBS only) 0.01M PBS Shipped at 4°C. Store at -20°C for one year. Avoid repeated freeze/thaw cycles. Background: This gene encodes a chromatin-associated enzyme, poly(ADP-ribose)transferase, which modifies various nuclear proteins by poly(ADP-ribose)ylation. The modification is dependent on DNA and is involved in the regulation of various important cellular processes such as differentiation, proliferation, and tumor transformation and also in the regulation of the molecular events involved in the recovery of cell from DNA damage. In addition, this enzyme may be the site of mutation in Fanconi anemia, and may participate in the pathophysiology of type I diabetes. [provided by RefSeq, Jul 2008].	Isotype: IgG CloneNo.: 4B1 SWISS: P09874	Applications: IHC-P (1:200-800) IHC-F (1:500-1000) IF (1:500-1000) Reactivity: Human Predicted MW.: 89/116 kDa Subcellular Location: Nucleus
--	---	---

— VALIDATION IMAGES —

Paraformaldehyde-fixed, paraffin embedded (Human brain glioma); Antigen retrieval by boiling in sodium citrate buffer (pH6.0) for 15min; Block endogenous peroxidase by 3% hydrogen peroxide for 20 minutes; Blocking buffer (normal goat serum) at 37°C for 30min; Antibody incubation with (Cleaved PARP) Monoclonal Antibody, Unconjugated (bsm-33151M 4B1) at 1:400 overnight at 4°C, followed by operating according to SP Kit(Mouse) (sp-0024) instructions and DAB staining.

— SELECTED CITATIONS —

- **[IF=3.998]** Hongbin Guo. et al. Metabolites profiling and pharmacokinetics of troxipide and its pharmacodynamics in rats with gastric ulcer. Sci Rep-Uk. 2020 Aug;10(1):1-21 IHC ;Rat. 32788674