

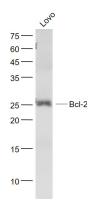
bsm-33413M**[Primary Antibody]****BioSS**
ANTIBODIES

www.bioss.com.cn

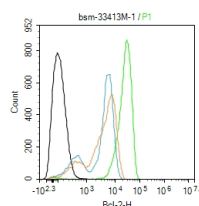
sales@bioss.com.cn

techsupport@bioss.com.cn

400-901-9800

Bcl-2 Mouse mAb**— DATASHEET —****Host:** Mouse**Isotype:** IgG2b,k**Clonality:** Monoclonal**CloneNo.:** 4H1**GeneID:** 596**SWISS:** P10415**Target:** Bcl-2**Immunogen:** KLH conjugated synthetic peptide derived from human Bcl-2: 51-150/239.**Purification:** affinity purified by Protein G**Concentration:** 1mg/ml**Storage:** Size : 50ul/100ul/200ul
0.01M TBS (pH7.4) with 1% BSA, 0.02% Proclin300 and 50% Glycerol.
Size : 200ug (PBS only)
0.01M PBS
Shipped at 4°C. Store at -20°C for one year. Avoid repeated freeze/thaw cycles.**Background:** The Bcl-2 gene was isolated at the chromosomal breakpoint of t(14;18)-bearing follicular B cell lymphomas(1,2).Bcl-2 blocks cell death following a variety of stimuli and confers a death-sparing effect to certain hematopoietic cell lines following growth factor withdrawal (3,5).Bcl-2 appears to function in several subcellular locations yet lacks any known motifs that would confer insight into its mechanism of action (6,7).A more recently identified protein,designated Bax p21(i.e., Bcl-associated X protein),has extensive amino acid homology with Bcl-2 and both homodimerizes and forms heterodimers with Bcl-2(8). Overexpression of Bax accelerates apoptotic death induced by cytokine deprivation in an IL-3 dependent cell line and Bax also counters the death repressor activity of Bcl-2(8).**Applications:** WB (1:500-2000)**Flow-Cyt** (1:100)**Reactivity:** Human (predicted: Mouse, Rat, Rabbit, Pig, Sheep, Cow, Dog, GuineaPig, Horse)**Predicted MW.:** 26 kDa**Subcellular Location:** Cell membrane ,Cytoplasm ,Nucleus**— VALIDATION IMAGES —**

Sample: LOVO(Human) Cell Lysate at 30 ug
 Primary: Anti- Bcl-2 (bsm-33413M) at 1/1000
 dilution Secondary: IRDye800CW Goat Anti-Mouse IgG at 1/20000 dilution Predicted band size: 26 kD Observed band size: 26 kD



Blank control: Ctl-2. Primary Antibody (green line): Mouse Anti-Bcl-2 antibody (bsm-33413M) Dilution: 1:100; Secondary Antibody : Goat anti-mouse IgG-FITC Dilution: 0.5ug/Test. Protocol The cells were fixed with 4% PFA (10min at room temperature)and then permeabilized with 90% ice-cold methanol for 20 min at -20°C.The cells were then incubated in 5%BSA to block non-specific protein-protein interactions for 30 min at room temperature .Cells stained with Primary Antibody for 30 min at room temperature. The secondary antibody used for 40 min at room temperature. Acquisition of 20,000 events was performed.

— SELECTED CITATIONS —

Important Note: This product as supplied is intended for research use only, not for use in human, therapeutic or diagnostic applications.

- **[IF=3.2]** Jinye Lu. et al. Lnc-ANRIL modulates the immune response associated with NF-κB pathway in LPS-stimulated bovine mammary epithelial cells. IMMUN INFLAMM DIS. 2023 Dec;11(12):e1125 WB ;Bovine. 38156382