

bsm-54021R**[Primary Antibody]****Annexin A2 (2F4) Recombinant Rabbit mAb****BioSS**
ANTIBODIES

www.bioss.com.cn

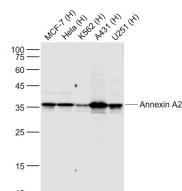
sales@bioss.com.cn

techsupport@bioss.com.cn

400-901-9800

— DATASHEET —**Host:** Rabbit**Isotype:** IgG**Clonality:** Recombinant**CloneNo.:** 2F4**GeneID:** 302**SWISS:** P07355**Target:** Annexin A2 (2F4)**Immunogen:** Recombinant Human Annexin A2 : 1-200/339.**Purification:** affinity purified by Protein A**Concentration:** 1mg/ml**Storage:** 0.01M TBS (pH7.4) with 1% BSA, 0.02% Proclin300 and 50% Glycerol.

Store at -20°C for one year. Avoid repeated freeze/thaw cycles. The lyophilized antibody is stable at room temperature for at least one month and for greater than a year when kept at -20°C. When reconstituted in sterile pH 7.4 0.01M PBS or diluent of antibody the antibody is stable for at least two weeks at 2-4°C.

Background: This gene encodes a member of the annexin family. Members of this calcium-dependent phospholipid-binding protein family play a role in the regulation of cellular growth and in signal transduction pathways. This protein functions as an autocrine factor which heightens osteoclast formation and bone resorption. This gene has three pseudogenes located on chromosomes 4, 9 and 10, respectively. Multiple alternatively spliced transcript variants encoding different isoforms have been found for this gene. [provided by RefSeq, Jul 2008].**Applications:** WB (1:300-1000)**IHC-P** (1:100-500)**IHC-F** (1:200-400)**IF** (1:50-200)**ICC/IF** (1:50)**Reactivity:** Human**Predicted MW.:** 36 kDa**Subcellular Location:** Secreted ,Extracellular matrix ,Cell membrane ,Cytoplasm**— VALIDATION IMAGES —**

Sample: Lane 1: MCF-7 (Human) Cell Lysate at 30 ug
 Lane 2: Hela (Human) Cell Lysate at 30 ug
 Lane 3: K562 (Human) Cell Lysate at 30 ug
 Lane 4: A431 (Human) Cell Lysate at 30 ug
 Lane 5: U251 (Human) Cell Lysate at 30 ug
 Primary: Anti-Annexin A2 (bsm-54021R) at 1/1000 dilution
 Secondary: IRDye800CW Goat Anti-Rabbit IgG at 1/20000 dilution
 Predicted band size: 38 kD
 Observed band size: 36 kD