

bs-0292R**[Primary Antibody]****BioSS**
ANTIBODIES

www.bioss.com.cn

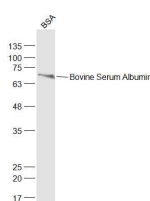
sales@bioss.com.cn

techsupport@bioss.com.cn

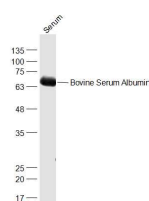
400-901-9800

Bovine Serum Albumin Rabbit pAb**DATASHEET**

Host: Rabbit Clonality: Polyclonal Target: Bovine Serum Albumin Immunogen: Bovine Serum Albumin: full length. Purification: affinity purified by Protein A Concentration: 1mg/ml Storage: 0.01M TBS (pH7.4) with 0.02% Proclin300 and 50% Glycerol. Shipped at 4°C. Store at -20°C for one year. Avoid repeated freeze/thaw cycles. Background: This gene encodes the most abundant protein in human blood. This protein functions in the regulation of blood plasma colloid osmotic pressure and acts as a carrier protein for a wide range of endogenous molecules including hormones, fatty acids, and metabolites, as well as exogenous drugs. Additionally, this protein exhibits an esterase-like activity with broad substrate specificity. The encoded preproprotein is proteolytically processed to generate the mature protein. A peptide derived from this protein, EPI-X4, is an endogenous inhibitor of the CXCR4 chemokine receptor. [provided by RefSeq, Jul 2016]	Isotype: IgG Applications: WB (1:500-2000) Reactivity: Human, Mouse, Rat, Cow, Goat Predicted MW.: 69 kDa Subcellular Location: Secreted
--	---

VALIDATION IMAGES

Sample: BSA (Cow) at 40 ug Primary: Anti-Bovine Serum Albumin (bs-0292R) at 1/1000 dilution
 Secondary: IRDye800CW Goat Anti-Rabbit IgG at 1/20000 dilution Predicted band size: 69 kD
 Observed band size: 69 kD



Sample: Serum (Cow) at 40 ug Primary: Anti-Bovine Serum Albumin (bs-0292R) at 1/1000 dilution Secondary: IRDye800CW Goat Anti-Rabbit IgG at 1/20000 dilution Predicted band size: 69 kD Observed band size: 69 kD

SELECTED CITATIONS

- **[IF=21.567]** Yutaro Mori. et al. KIM-1 mediates fatty acid uptake by renal tubular cells to promote progressive diabetic kidney disease. Cell Metab. 2021 May;33:1042 IF ;Human, Mouse. 33951465
- **[IF=10.618]** Min Chen. et al. An electron donor-acceptor organic photoactive composite with Schottky heterojunction induced photoelectrochemical immunoassay. Biosens Bioelectron. 2021 Nov;191:113475 Other ;. 34246895
- **[IF=4.774]** Yasunobu Asawa. et al. Carborane as an Alternative Efficient Hydrophobic Tag for Protein Degradation. Bioconjugate Chem. 2021;XXXX(XXX):XXX-XXX WB ;Human. 34699716
- **[IF=3.73]** Chen, Cheng-Hsien, et al. "MicroRNA-328 Inhibits Renal Tubular Cell Epithelial-to-Mesenchymal Transition by Targeting the CD44 in Pressure-Induced Renal Fibrosis." PLoS one 9.6 (2014): e99802. Other ;="Bovine". 24919189
- **[IF=3.057]** Wei Zhang. et al. Nanometer-Sized Boron Loaded Liposomes Containing Fe3O4 Magnetic Nanoparticles and Tributyl Borate and Anti-Albumin from Bovine Serum Antibody for Thermal Neutron Detection. Materials. 2021 Jan;14(11):3040 Other ;. 34204954

Important Note: This product as supplied is intended for research use only, not for use in human, therapeutic or diagnostic applications.