

bs-3462R**[Primary Antibody]****BioSS**
ANTIBODIES

www.bioss.com.cn

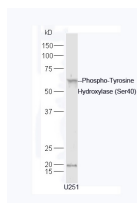
sales@bioss.com.cn

techsupport@bioss.com.cn

400-901-9800

phospho-Tyrosine Hydroxylase (Ser40) Rabbit pAb**— DATASHEET —**

Host: Rabbit	Isotype: IgG	Applications: WB (1:500-2000)
Clonality: Polyclonal		Reactivity: Human
GeneID: 25085	SWISS: P04177	
Target: Tyrosine Hydroxylase (Ser40)		
Immunogen: KLH conjugated Synthesised phosphopeptide derived from rat TH around the phosphorylation site of Ser40: RQ(p-S)LI.		Predicted MW.: 58 kDa
Purification: affinity purified by Protein A		Subcellular Location: Cell membrane ,Cytoplasm
Concentration: 1mg/ml		
Storage: 0.01M TBS (pH7.4) with 1% BSA, 0.02% Proclin300 and 50% Glycerol. Shipped at 4°C. Store at -20°C for one year. Avoid repeated freeze/thaw cycles.		
Background: bs-0016P is one synthetic peptide derived from human TH. The protein encoded by this gene is involved in the conversion of tyrosine to dopamine. It is the rate-limiting enzyme in the synthesis of catecholamines, hence plays a key role in the physiology of adrenergic neurons. Mutations in this gene have been associated with autosomal recessive Segawa syndrome. Alternatively spliced transcript variants encoding different isoforms have been noted for this gene. [provided by RefSeq, Jul 2008]		

— VALIDATION IMAGES —

Sample: U251 Cell lysate at 30ug; Primary: Anti-Phospho-Tyrosine Hydroxylase (Ser40) (bs-3462R) at 1:300 dilution; Secondary: HRP conjugated Goat-Anti-rabbit IgG(bs-0295G-HRP) at 1: 5000 dilution; Predicted band size: 60 kD
Observed band size: 60 kD