

bs-21988R**[Primary Antibody]****NCF4 Rabbit pAb****BioSS**
ANTIBODIES

www.bioss.com.cn

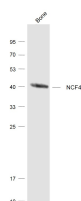
sales@bioss.com.cn

techsupport@bioss.com.cn

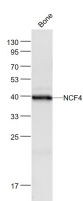
400-901-9800

— DATASHEET —

Host: Rabbit	Isotype: IgG	Applications: WB (1:500-2000)
Clonality: Polyclonal		Reactivity: Mouse (predicted: Human, Rat, Sheep, Cow, Horse)
GeneID: 4689	SWISS: Q15080	
Target: NCF4		Predicted MW.: 39 kDa
Immunogen: KLH conjugated synthetic peptide derived from human NCF4 : 1-100/339.		Subcellular Location: Cytoplasm
Purification: affinity purified by Protein A		
Concentration: 1mg/ml		
Storage: 0.01M TBS (pH7.4) with 1% BSA, 0.02% Proclin300 and 50% Glycerol. Shipped at 4°C. Store at -20°C for one year. Avoid repeated freeze/thaw cycles.		
Background: NCF4 is a cytosolic oxidase associated protein. It is a component of the nicotinamide adenine dinucleotide phosphate oxidase, which mediates down regulation of NADPH oxidase through interactions with its SH3 domain. NCF4 is associated with p67 phox but is absent in patients with chronic granulomatous disease who lack p67 phox.		

— VALIDATION IMAGES —

Sample: Bone (Mouse) Lysate at 40 ug Primary:
Anti-NCF4 (bs-21988R) at 1/1000 dilution
Secondary: IRDye800CW Goat Anti-Rabbit IgG at 1/20000 dilution Predicted band size: 39 kD
Observed band size: 39 kD



Sample: Bone (Mouse) Lysate at 40 ug Primary:
Anti- NCF4 (bs-21988R) at 1/1000 dilution
Secondary: IRDye800CW Goat Anti-Rabbit IgG at 1/20000 dilution Predicted band size: 39 kD
Observed band size: 39 kD