

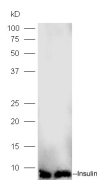
bs-0862R**[Primary Antibody]****Insulin Rabbit pAb****Bioss**
ANTIBODIES

www.bioss.com.cn

sales@bioss.com.cn

techsupport@bioss.com.cn

400-901-9800

— DATASHEET —**Host:** Rabbit**Isotype:** IgG**Applications:** WB (1:500-2000)**Clonality:** Polyclonal**Reactivity:** Human (predicted: Mouse, Rat, Pig)**Target:** Insulin**Purification:** affinity purified by Protein A**Concentration:** 1mg/ml**Predicted MW.:** 5.77754 kDa**Storage:** 0.01M TBS (pH7.4) with 1% BSA, 0.02% Proclin300 and 50% Glycerol.
Shipped at 4°C. Store at -20°C for one year. Avoid repeated freeze/thaw cycles.**Subcellular Location:** Secreted**Background:** Insulin is one of the major regulatory hormones of intermediate metabolism throughout the body. The biological actions of this hormone involve integration of carbohydrate, protein, and lipid metabolism. Insulin enhances membrane transport of glucose, amino acids, and certain ions. It also promotes glycogen storage, formation of triglycerides and synthesis of proteins and nucleic acids. Immunocytochemical investigations have localized insulin in the B cells of pancreatic islets of Langerhans. Deficiency of insulin results in diabetes mellitus, one of the leading causes of morbidity and mortality in the general population. Insulin is also present in tumors of B cell origin such as insulinoma.**— VALIDATION IMAGES —**

Sample: Lane1: Islet A lysates at 20ug;
 line2, Islet B lysates at 20ug; Primary: Anti-Insulin
 (bs-0862R) at 1:300 dilution; Secondary: HRP
 conjugated Goat-Anti-rabbit IgG(bs-0295G-HRP)
 at 1: 5000 dilution; Predicted band size:5.8 kD
 Observed band size:5.8 kD

— SELECTED CITATIONS —

- **[IF=10.273]** Vlahos AE et al. Endothelialized collagen based pseudo-islets enables tuneable subcutaneous diabetes therapy. Biomaterials. 2019 Dec 26;232:119710. ICC ;Rat&Human. 31901691
- **[IF=6.1]** Paritosh Ghosh. et al. Pancreatic β cell derived extracellular vesicles containing surface preproinsulin are involved in glucose stimulated insulin secretion. LIFE SCI. 2024 Mar;340:122460 WB ;Human. 38286207
- **[IF=5.705]** Sun HD et al. Electrochemical sandwich immunoassay for insulin detection based on the use of gold nanoparticle-modified MoS₂ nanosheets and the hybridization chain reaction. Microchimica Acta,2018 186(1). Other ;. 10.1007/s00604-018-3124-8
- **[IF=5.6]** Yuyao Zhang. et al. Enhanced Electrochemiluminescence from Ruthenium-Tagged Immune Complex at Flexible Chains for Sensitive Analysis of Glutamate Decarboxylase Antibody. BIOSENSORS-BASEL. 2025 Jan;15(1):47 ;Human. 39852098
- **[IF=4.556]** Hsiao-Pei Tsai. et al. Risperidone Exacerbates Glucose Intolerance, Nonalcoholic Fatty Liver Disease, and

Important Note: This product as supplied is intended for research use only, not for use in human, therapeutic or diagnostic applications.

