

bs-2715R**[Primary Antibody]****BioSS**
ANTIBODIES

www.bioss.com.cn

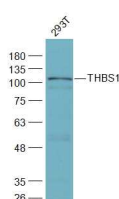
sales@bioss.com.cn

techsupport@bioss.com.cn

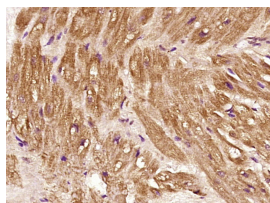
400-901-9800

THBS1 Rabbit pAb**— DATASHEET —**

Host: Rabbit Clonality: Polyclonal GeneID: 7057 Target: THBS1 Immunogen: KLH conjugated synthetic peptide derived from human TSP-1: 801-900/1170. Purification: affinity purified by Protein A Concentration: 1mg/ml Storage: 0.01M TBS (pH7.4) with 1% BSA, 0.02% Proclin300 and 50% Glycerol. Shipped at 4°C. Store at -20°C for one year. Avoid repeated freeze/thaw cycles. Background: The protein encoded by this gene is a subunit of a disulfide-linked homotrimeric protein. This protein is an adhesive glycoprotein that mediates cell-to-cell and cell-to-matrix interactions. This protein can bind to fibrinogen, fibronectin, laminin, type V collagen and integrins alpha-V/beta-1. This protein has been shown to play roles in platelet aggregation, angiogenesis, and tumorigenesis. [provided by RefSeq].	Isotype: IgG SWISS: P07996	Applications: WB (1:500-2000) IHC-P (1:100-500) IHC-F (1:100-500) IF (1:100-500) Reactivity: Human, Zebrafish (predicted: Mouse, Rat, Rabbit, Pig, Cow, Chicken, Horse) Predicted MW.: 129 kDa Subcellular Location: Cytoplasm
---	---	---

— VALIDATION IMAGES —

Sample: 293T(Human) Cell Lysate at 30 ug
Primary: Anti-THBS1 (bs-2715R) at 1/2000
dilution Secondary: IRDye800CW Goat Anti-Rabbit IgG at 1/20000 dilution Predicted band size: 129 kD Observed band size: 129 kD



Paraformaldehyde-fixed, paraffin embedded (human myocardial tissue); Antigen retrieval by boiling in sodium citrate buffer (pH6.0) for 15min; Block endogenous peroxidase by 3% hydrogen peroxide for 20 minutes; Blocking buffer (normal goat serum) at 37°C for 30min; Antibody incubation with (THBS1) Polyclonal Antibody, Unconjugated (bs-2715R) at 1:400 overnight at 4°C, followed by operating according to SP Kit(Rabbit) (sp-0023) instructions and DAB staining.

— SELECTED CITATIONS —

- **[IF=7.7]** Yufang Niu. et al. The long noncoding RNA lncMPD2 inhibits myogenesis by targeting the miR-34a-5p/THBS1 axis. INT J BIOL MACROMOL. 2024 Aug;275:133688 WB ;Chicken. 38971281
- **[IF=7.2]** Zheng Zeng. et al. Enterolactone and trabectedin suppress epithelial ovarian cancer synergistically via upregulating THBS1. PHYTOTHER RES. 2023 Jul;: WB ;Mouse. 37443453
- **[IF=5.6]** Maggie Lutz. et al. Therapeutic Targeting of the GSK3β-CUGBP1 Pathway in Myotonic Dystrophy. INT J MOL SCI. 2023 Jan;24(13):10650 WB ;Mouse. 37445828
- **[IF=4.803]** Duan F et al. THBS1 regulates trophoblast fusion through a CD36-dependent inhibition of cAMP, and its

Important Note: This product as supplied is intended for research use only, not for use in human, therapeutic or diagnostic applications.

upregulation participates in preeclampsia. Genes & Diseases, (2020), S2352304220300726-. WB ;Human.
10.1016/j.gendis.2020.05.007

- **[IF=4.7]** Zhang Ying. et al. Mechanical stress facilitates calcium influx and growth of alveolar epithelial cells via activation of the BDKRB1/Ca²⁺/CaMKII/MEK1/ERK axis. RESP RES. 2025 Dec;26(1):1-12 WB ;Rat. 40296124