

bs-2217R**[Primary Antibody]**

Bioss
ANTIBODIES

www.bioss.com.cn

sales@bioss.com.cn

techsupport@bioss.com.cn

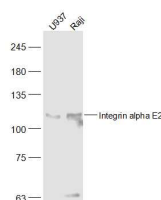
400-901-9800

Integrin alpha E Rabbit pAb

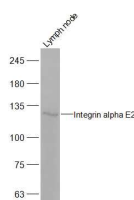
— DATASHEET —

Host: Rabbit	Isotype: IgG	Applications: WB (1:500-2000) Flow-Cyt (1ug/test)
Clonality: Polyclonal		Reactivity: Human, Mouse (predicted: Rat, Rabbit, Dog)
GeneID: 3682	SWISS: P38570	Predicted MW.: 110/128 kDa
Target: Integrin alpha E		Subcellular Location: Cell membrane
Immunogen: KLH conjugated synthetic peptide derived from human Integrin alpha-E heavy chain: 1101-1179/1179. < Cytoplasmic >		
Purification: affinity purified by Protein A		
Concentration: 1mg/ml		
Storage: 0.01M TBS (pH7.4) with 1% BSA, 0.02% Proclin300 and 50% Glycerol. Shipped at 4°C. Store at -20°C for one year. Avoid repeated freeze/thaw cycles.		
Background: Integrins are heterodimeric integral membrane proteins composed of an alpha chain and a beta chain. This gene encodes an I-domain-containing alpha integrin that undergoes post-translational cleavage in the extracellular domain, yielding disulfide-linked heavy and light chains. In combination with the beta 7 integrin, this protein forms the E-cadherin binding integrin known as the human mucosal lymphocyte-1 antigen. This protein is preferentially expressed in human intestinal intraepithelial lymphocytes (IEL), and in addition to a role in adhesion, it may serve as an accessory molecule for IEL activation. [provided by RefSeq, Jul 2008]		

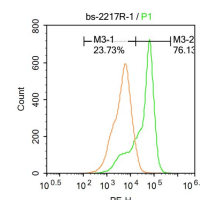
— VALIDATION IMAGES —



Sample: U937(Human) Cell Lysate at 30 ug
Raji(Human) Cell Lysate at 30 ug Primary: Anti-Integrin alpha E2 (bs-2217R) at 1/300 dilution
Secondary: IRDye800CW Goat Anti-Rabbit IgG at 1/20000 dilution Predicted band size: 110/128 kD
Observed band size: 110 kD



Sample: Lymph node (Mouse) Lysate at 40 ug
Primary: Anti-Integrin alpha E2 (bs-2217R) at 1/300 dilution Secondary: IRDye800CW Goat Anti-Rabbit IgG at 1/20000 dilution Predicted band size: 110/128 kD Observed band size: 128 kD



Molt-4 cells were fixed with 4% PFA for 10min at room temperature, permeabilized with 20% PBST for 20 min at room temperature, and incubated in 5% BSA blocking buffer for 30 min at room temperature. Cells were then stained with CD103 Antibody(bs-2217R)at 1:500 dilution in blocking buffer and incubated for 30 min at room temperature, washed twice with 2%BSA in PBS, followed by secondary antibody incubation for 40 min at room temperature. Acquisitions of 20,000 events were performed. Cells stained with primary antibody (green), and isotype control (orange).