

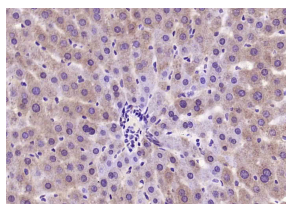
bs-24314R**[Primary Antibody]****Factor I light chain Rabbit pAb****BioSS**
ANTIBODIES

www.bioss.com.cn

sales@bioss.com.cn

techsupport@bioss.com.cn

400-901-9800

— DATASHEET —**Host:** Rabbit**Isotype:** IgG**Clonality:** Polyclonal**Target:** Factor I light chain**Immunogen:** KLH conjugated synthetic peptide derived from mouse Factor I light chain : 451-550/582.**Purification:** affinity purified by Protein A**Concentration:** 1mg/ml**Storage:** 0.01M TBS (pH7.4) with 1% BSA, 0.02% Proclin300 and 50% Glycerol.
Shipped at 4°C. Store at -20°C for one year. Avoid repeated freeze/thaw cycles.**Background:** The complement pathway is an important host defense system that contributes to both innate and acquired immunity. There are three pathways of complement activation: the classical pathway, lectin pathway and alternative pathway. Complement protein Factor I is a key serine protease that modulates the complement cascade by regulating the levels of C3 convertases. It circulates in plasma as a heavily N-glycosylated heterodimer made up of two disulfide linked chains, each carrying three N-linked oligosaccharide chains that may have both structural and functional roles in the interactions with the natural substrate and the cofactor during catalysis. Factor I is a serine protease with a high degree of specificity for C3b and C4b. It requires protein cofactors for cleavage of these complement proteins; Factor H, CR1 or MCP are required for C3b cleavage, and C4bp or CR1 are required for C4b cleavage.**Applications:** IHC-P (1:100-500)**IHC-F** (1:100-500)**IF** (1:100-500)**Reactivity:** Rat (predicted: Mouse, Cow)**Predicted MW.:** 22 kDa**Subcellular Location:** Secreted ,Extracellular matrix**— VALIDATION IMAGES —**

Paraformaldehyde-fixed, paraffin embedded (rat liver); Antigen retrieval by boiling in sodium citrate buffer (pH6.0) for 15min; Block endogenous peroxidase by 3% hydrogen peroxide for 20 minutes; Blocking buffer (normal goat serum) at 37°C for 30min; Antibody incubation with (Factor I light chain) Polyclonal Antibody, Unconjugated (bs-24314R) at 1:400 overnight at 4°C, followed by operating according to SP Kit(Rabbit) (sp-0023) instructions and DAB staining.