

## IRE1 Rabbit pAb

Catalog Number: bs-16696R

Target Protein: IRE1

Concentration: 1mg/ml

Form: Liquid

Host: Rabbit

Clonality: Polyclonal

Isotype: IgG

Applications: WB (1:500-2000), IHC-P (1:100-500), IHC-F (1:100-500), IF (1:100-500)

Reactivity: Human, Mouse, Pig (predicted:Rat)

Predicted MW: 105 kDa

Entrez Gene: 10595

Swiss Prot: O75460

Source: KLH conjugated synthetic peptide derived from human IRE1: 19-120/977.

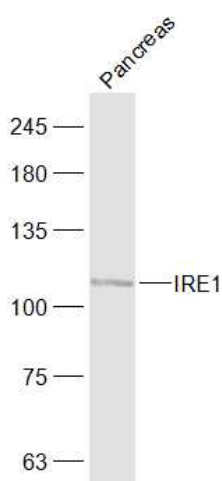
Purification: affinity purified by Protein A

Storage: 0.01M TBS (pH7.4) with 1% BSA, 0.02% Proclin300 and 50% Glycerol.

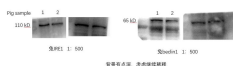
Shipped at 4°C. Store at -20°C for one year. Avoid repeated freeze/thaw cycles.

Background: ERN2, endoplasmic reticulum to nucleus signaling 2, induces translational repression through 28S ribosomal RNA cleavage in response to ER stress. It is pro-apoptotic and appears to play no role in the unfolded-protein response, unlike closely related proteins.

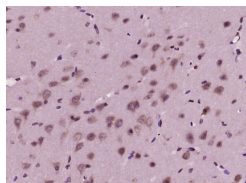
### VALIDATION IMAGES



Sample: Pancreas (Mouse) Lysate at 40 ug Primary: Anti-IRE1 (bs-16696R) at 1/1000 dilution Secondary: IRDye800CW Goat Anti-Rabbit IgG at 1/20000 dilution Predicted band size: 105 kD Observed band size: 105 kD



Sample: Pig Primary: Anti-IRE1 (bs-16696R) at 1/500 dilution



Paraformaldehyde-fixed, paraffin embedded (mouse brain tissue); Antigen retrieval by boiling in sodium citrate buffer (pH6.0) for 15min; Block endogenous peroxidase by 3% hydrogen peroxide for 20 minutes; Blocking buffer (normal goat serum) at 37°C for 30min; Antibody incubation with (IRE1) Polyclonal Antibody, Unconjugated (bs-16696R) at 1:400 overnight at 4°C, followed by operating according to SP Kit(Rabbit) (sp-0023) instructions and DAB staining.

## PRODUCT SPECIFIC PUBLICATIONS

[IF=18.962] Xue Li. et al. Dual regulation on oxidative stress and endoplasmic reticulum stress by [70] fullerenes for reversing insulin resistance in diabetes. NANO TODAY. 2022 Aug;45:101541 WB ; Mouse . 10.1016/j.nantod.2022.101541

[IF=4.784] Wang L et al. Radioprotective effect of Hohenbuehelia serotina polysaccharides through mediation of ER apoptosis pathway in vivo. Int J Biol Macromol. 2019 Apr 15;127:18-26. IHC ; Mouse . 30605745

[IF=5.391] Yang P et al. Loss of CD36 impairs hepatic insulin signaling by enhancing the interaction of PTP1B with IR. FASEB J. 2020 Apr;34(4):5658-5672. WB ; mouse . 32100381

[IF=4.268] Chunli Wang. et al. Safflower yellow alleviates osteoarthritis and prevents inflammation by inhibiting PGE2 release and regulating NF-κB/SIRT1/AMPK signaling pathways. Phytomedicine. 2020 Nov;78:153305 WB ; Rat . 32871523

[IF=3.219] Yuting Li. et al. Evodiamine suppresses the progression of non-small cell lung carcinoma via endoplasmic reticulum stress-mediated apoptosis pathway in vivo and in vitro:. INT J IMMUNOPATH PH. Int J Immunopath Ph. 2022;(): WB ; Human,Mouse . 35388733