

bs-5103R**[Primary Antibody]****BioSS**
ANTIBODIES

www.bioss.com.cn

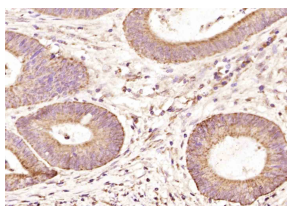
sales@bioss.com.cn

techsupport@bioss.com.cn

400-901-9800

PTPMT1 Rabbit pAb**— DATASHEET —**

Host: Rabbit	Isotype: IgG	Applications: IHC-P (1:100-500)
Clonality: Polyclonal		IHC-F (1:100-500)
GeneID: 114971	SWISS: Q8WUK0	IF (1:100-500)
Target: PTPMT1		
Immunogen: KLH conjugated synthetic peptide derived from human PTPMT1: 101-201/201.		
Purification: affinity purified by Protein A		Reactivity: Human (predicted: Mouse, Rat, Pig, Cow, Dog, Horse)
Concentration: 1mg/ml		
Storage: 0.01M TBS (pH7.4) with 1% BSA, 0.02% Proclin300 and 50% Glycerol. Shipped at 4°C. Store at -20°C for one year. Avoid repeated freeze/thaw cycles.		Predicted MW.: 21 kDa
Background: This protein phosphatase specifically mediates the dephosphorylation of mitochondrial proteins and consequently plays a central role in ATP production. It probably has a preference for proteins phosphorylated on Ser and/or Thr residues compared to phosphorylation on Tyr residues. It is likely to be involved in the regulation of insulin secretion in pancreatic beta cells.		Subcellular Location: Cell membrane ,Cytoplasm

— VALIDATION IMAGES —

Paraformaldehyde-fixed, paraffin embedded (human colon carcinoma); Antigen retrieval by boiling in sodium citrate buffer (pH6.0) for 15min; Block endogenous peroxidase by 3% hydrogen peroxide for 20 minutes; Blocking buffer (normal goat serum) at 37°C for 30min; Antibody incubation with (PTPMT1) Polyclonal Antibody, Unconjugated (bs-5103R) at 1:400 overnight at 4°C, followed by operating according to SP Kit(Rabbit) (sp-0023) instructions and DAB staining.