

bs-2373R**[Primary Antibody]**

www.bioss.com.cn

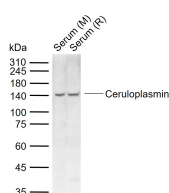
sales@bioss.com.cn

techsupport@bioss.com.cn

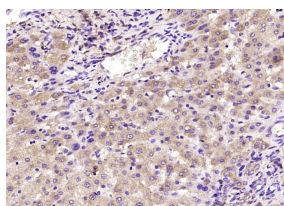
400-901-9800

Ceruloplasmin Rabbit pAb**— DATASHEET —**

Host: Rabbit	Isotype: IgG	Applications: WB (1:500-2000) IHC-P (1:100-500) IHC-F (1:100-500) IF (1:100-500) Reactivity: Human, Mouse, Rat (predicted: Rabbit, Dog) Predicted MW.: 120 kDa Subcellular Location: Secreted
Clonality: Polyclonal		
GeneID: 1356	SWISS: P00450	
Target: Ceruloplasmin		
Immunogen: KLH conjugated synthetic peptide derived from human Ceruloplasmin: 551-650/1065.		
Purification: affinity purified by Protein A		
Concentration: 1mg/ml		
Storage: 0.01M TBS (pH7.4) with 1% BSA, 0.02% Proclin300 and 50% Glycerol. Shipped at 4°C. Store at -20°C for one year. Avoid repeated freeze/thaw cycles.		
Background: Caeruloplasmin is a copper binding plasma glycoprotein consisting of a single polypeptide chain. It has a molecular weight of 132kDa and occurs in plasma at a concentration of 150-500 mg/L. Although the physiological functions of Caeruloplasmin are not fully understood it is implicated in a number of possible functions. 95% of plasma copper is bound to Caeruloplasmin, implying some involvement in copper transport. Caeruloplasmin has been described as both an oxidant and an antioxidant, its exact role or roles in this respect are not clear. Plasma levels of Caeruloplasmin are elevated after inflammation and trauma and it is therefore classified as an acute phase protein. The measurement of Caeruloplasmin in plasma is useful in the diagnosis of Wilson's disease, where levels are greatly reduced. Caeruloplasmin is extremely labile in plasma and rapidly degrades to 115kDa and 19kDa fragments. The age of plasma samples should therefore be taken into account when interpreting immunological analysis of caeruloplasmin.		

— VALIDATION IMAGES —

Sample: Lane 1: Mouse Serum tissue lysates
Lane 2: Rat Serum tissue lysates Primary: Anti-Ceruloplasmin (bs-2373R) at 1/1000 dilution
Secondary: IRDye800CW Goat Anti-Rabbit IgG at 1/20000 dilution Predicted band size: 120 kDa
Observed band size: 140 kDa



Paraformaldehyde-fixed, paraffin embedded (human liver tissue); Antigen retrieval by boiling in sodium citrate buffer (pH6.0) for 15min; Block endogenous peroxidase by 3% hydrogen peroxide for 20 minutes; Blocking buffer (normal goat serum) at 37°C for 30min; Antibody incubation with (Ceruloplasmin) Polyclonal Antibody, Unconjugated (bs-2373R) at 1:400 overnight at 4°C, followed by operating according to SP Kit(Rabbit) (sp-0023) instructions and DAB staining.

— SELECTED CITATIONS —

- **[IF=7.5]** Jinfeng Shang. et al. Chrysin inhibits ferroptosis of cerebral ischemia/reperfusion injury via regulating

Important Note: This product as supplied is intended for research use only, not for use in human, therapeutic or diagnostic applications.

HIF-1 α /CP loop. BIOMED PHARMACOTHER. 2024 May;174:116500 IHC ;Rat. 38555815