

**bs-22228R**

**[ Primary Antibody ]**

## CDCA7 Rabbit pAb

**BioSS**  
ANTIBODIES

www.bioss.com.cn

sales@bioss.com.cn

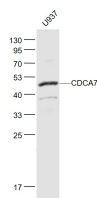
techsupport@bioss.com.cn

400-901-9800

### — DATASHEET —

<b>Host:</b> Rabbit	<b>Isotype:</b> IgG	<b>Applications:</b> WB (1:500-2000)
<b>Clonality:</b> Polyclonal		
<b>GeneID:</b> 83879	<b>SWISS:</b> Q9BWT1	
<b>Target:</b> CDCA7		
<b>Immunogen:</b> KLH conjugated synthetic peptide derived from human CDCA7 : 31-130/371.		
<b>Purification:</b> affinity purified by Protein A		<b>Reactivity:</b> Mouse (predicted: Human)
<b>Concentration:</b> 1mg/ml		
<b>Storage:</b> 0.01M TBS (pH7.4) with 1% BSA, 0.02% Proclin300 and 50% Glycerol. Shipped at 4°C. Store at -20°C for one year. Avoid repeated freeze/thaw cycles.		<b>Predicted MW.:</b> 43 kDa
<b>Background:</b> CDCA7 is a nuclear protein without a known function, although its high homology with the transcription factor JPO2 or RAM2 suggests that it is also a transcription factor. CDCA7 is one of many target genes regulated by the c-Myc transcription factor. Overexpression of CDCA7 occurs in a significant proportion of cancers and it may play an important role in tumorigenesis. Normally it is periodically expressed in the cell cycle, peaking at the G1 to S phase transition.		<b>Subcellular Location:</b> Nucleus

### — VALIDATION IMAGES —



Sample: U937(Human) Cell Lysate at 30 ug  
Primary: Anti- CDCA7 (bs-22228R) at 1/1000  
dilution Secondary: IRDye800CW Goat Anti-  
Rabbit IgG at 1/20000 dilution Predicted band  
size: 43 kD Observed band size: 48 kD