

## Phospho-SREBP2 (Thr334) Rabbit pAb

Catalog Number: bs-24294R

Target Protein: Phospho-SREBP2 (Thr334)

Concentration: 1mg/ml

Form: Liquid

Host: Rabbit

Clonality: Polyclonal

Isotype: IgG

Applications: WB (1:500-2000)

Reactivity: Human, Mouse, Rat (predicted:Rabbit, Pig, Sheep, Cow, Chicken, Horse)

Predicted MW: 126 kDa

Entrez Gene: 6721

Swiss Prot: Q12772

Source: KLH conjugated Synthesised phosphopeptide derived from human SREBP2 around the phosphorylation site of Thr334: RT(p-T)HN.

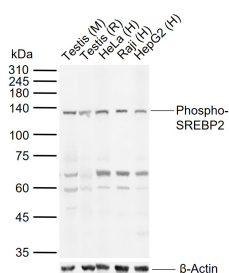
Purification: affinity purified by Protein A

Storage: 0.01M TBS (pH7.4) with 1% BSA, 0.02% Proclin300 and 50% Glycerol.

Shipped at 4°C. Store at -20°C for one year. Avoid repeated freeze/thaw cycles.

**Background:** This gene encodes a member of the a ubiquitously expressed transcription factor that controls cholesterol homeostasis by regulating transcription of sterol-regulated genes. The encoded protein contains a basic helix-loop-helix-leucine zipper (bHLH-Zip) domain and binds the sterol regulatory element 1 motif. Alternate splicing results in multiple transcript variants.

### VALIDATION IMAGES



Sample: Lane 1: Mouse Testis tissue lysates Lane 2: Rat Testis tissue lysates Lane 3: Human HeLa cell lysates Lane 4: Human Raji cell lysates Lane 5: Human HepG2 cell lysates Primary: Anti-Phospho-SREBP2(Thr334) (bs-24294R) at 1/1000 dilution Secondary: IRDye800CW Goat Anti-Rabbit IgG at 1/20000 dilution Predicted band size: 126 kDa Observed band size: 135 kDa