

bs-20430R**[Primary Antibody]**

Semaphorin 5A Rabbit pAb

BioSS
ANTIBODIES

www.bioss.com.cn

sales@bioss.com.cn

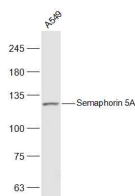
techsupport@bioss.com.cn

400-901-9800

— DATASHEET —

Host: Rabbit	Isotype: IgG	Applications: WB (1:500-2000)
Clonality: Polyclonal		Reactivity: Human (predicted: Mouse, Rat, Rabbit, Pig, Sheep, Cow, Zebrafish, Chicken, Dog)
GeneID: 9037	SWISS: Q13591	Predicted MW.: 118 kDa
Target: Semaphorin 5A		Subcellular Location: Cell membrane
Immunogen: KLH conjugated synthetic peptide derived from human Semaphorin 5A: 671-770/1074. < Extracellular >		
Purification: affinity purified by Protein A		
Concentration: 1mg/ml		
Storage: Preservative: 0.02% Proclin300, Constituents: 1% BSA, 0.01M PBS, pH7.4. Shipped at 4°C. Store at -20°C for one year. Avoid repeated freeze/thaw cycles.		
Background: This gene belongs to the semaphorin gene family that encodes membrane proteins containing a semaphorin domain and several thrombospondin type-1 repeats. Members of this family are involved in axonal guidance during neural development. This gene has been implicated as an autism susceptibility gene.		

— VALIDATION IMAGES —



Sample: A549(Human) Cell Lysate at 30 ug
Primary: Anti-Semaphorin 5A (bs-20430R) at 1/500 dilution
Secondary: IRDye800CW Goat Anti-Rabbit IgG at 1/20000 dilution
Predicted band size: 118 kD
Observed band size: 118 kD

— SELECTED CITATIONS —

- **[IF=16.6]** Qianqian Yang. et al. The NEXT complex regulates H3K27me3 levels to affect cancer progression by degrading G4/U-rich lncRNAs. Nucleic Acids Research. 2025 Feb 8;53(4):gkaf107. ChIP-seq, WB ;Human. 39988317