

bs-2759R**[Primary Antibody]****Bioss**
ANTIBODIES

www.bioss.com.cn

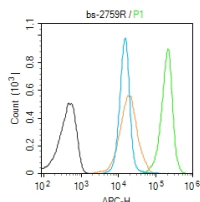
sales@bioss.com.cn

techsupport@bioss.com.cn

400-901-9800

Cofilin Rabbit pAb**DATASHEET**

Host: Rabbit Clonality: Polyclonal GeneID: 1072 Target: Cofilin Immunogen: Synthetic peptide from the human cofilin conjugated to KLH: 2-100/166. Purification: affinity purified by Protein A Concentration: 1mg/ml Storage: 0.01M TBS (pH7.4) with 1% BSA, 0.02% Proclin300 and 50% Glycerol. Shipped at 4°C. Store at -20°C for one year. Avoid repeated freeze/thaw cycles. Background: The protein encoded by this gene can polymerize and depolymerize F-actin and G-actin in a pH-dependent manner. Increased phosphorylation of this protein by LIM kinase aids in Rho-induced reorganization of the actin cytoskeleton. Cofilin is a widely distributed intracellular actin-modulating protein that binds and depolymerizes filamentous F-actin and inhibits the polymerization of monomeric G-actin in a pH-dependent manner. It is involved in the translocation of actin-cofilin complex from cytoplasm to nucleus.	Isotype: IgG SWISS: P23528	Applications: Flow-Cyt (1ug/Test) Reactivity: Human (predicted: Mouse, Rat, Pig, Sheep, Cow, Dog) Predicted MW.: 18 kDa Subcellular Location: Cell membrane ,Cytoplasm ,Nucleus
---	---	--

VALIDATION IMAGES

Blank control (Black line): Molt4 (Black). Primary Antibody (green line): Rabbit Anti-cofilin antibody (bs-2759R) Dilution: 1µg /10⁶ cells; Isotype Control Antibody (orange line): Rabbit IgG . Secondary Antibody (white blue line): Goat anti-rabbit IgG-AF647 Dilution: 1µg /test. Protocol The cells were fixed with 4% PFA (10min at room temperature)and then permeabilized with 90% ice-cold methanol for 20 min at room temperature. The cells were then incubated in 5%BSA to block non-specific protein-protein interactions for 30 min at room temperature .Cells stained with Primary Antibody for 30 min at room temperature. The secondary antibody used for 40 min at room temperature. Acquisition of 20,000 events was performed.

SELECTED CITATIONS

- **[IF=6.543]** Yang Lili. et al. Elucidating the Novel Mechanism of Ligustrazine in Preventing Postoperative Peritoneal Adhesion Formation. Oxid Med Cell Longev. 2022;2022:9226022 WB ;Rat,Human. 35308169

Important Note: This product as supplied is intended for research use only, not for use in human, therapeutic or diagnostic applications.

- **[IF=3.345]** Xu et al. Morphological and proteomic analyses reveal that unsaturated guluronate oligosaccharide modulates multiple functional pathways in murine macrophage RAW264.7 cells. (2015) Mar.Drug. 13:1798-818 WB ;Mouse. 25830683
- **[IF=1.39]** Lu et al. Overexpression of cofilin 1 in prostate cancer and the corresponding clinical implications. (2015) Oncol.Let. 9:2757-2761 IHC ;Human. 26137141