

**bs-9368R****[ Primary Antibody ]****OCEL1 Rabbit pAb****Bioss**  
**ANTIBODIES**

www.bioss.com.cn

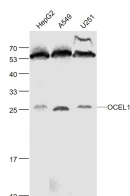
sales@bioss.com.cn

techsupport@bioss.com.cn

400-901-9800

**— DATASHEET —**

<b>Host:</b> Rabbit	<b>Isotype:</b> IgG	<b>Applications:</b> WB (1:500-2000)
<b>Clonality:</b> Polyclonal		<b>Reactivity:</b> Human (predicted: Mouse, Rat, Pig, Sheep, Cow)
<b>GeneID:</b> 79629	<b>SWISS:</b> Q9H607	
<b>Target:</b> OCEL1		<b>Predicted MW.:</b> 29 kDa
<b>Immunogen:</b> KLH conjugated synthetic peptide derived from human OCEL1: 171-264/264.		<b>Subcellular Location:</b> Cytoplasm ,Nucleus
<b>Purification:</b> affinity purified by Protein A		
<b>Concentration:</b> 1mg/ml		
<b>Storage:</b> 0.01M TBS (pH7.4) with 1% BSA, 0.02% Proclin300 and 50% Glycerol. Shipped at 4°C. Store at -20°C for one year. Avoid repeated freeze/thaw cycles.		
<b>Background:</b> OCEL1, is a 264 amino acid protein that is encoded by a gene which maps to human chromosome 19. Chromosome 19, which consists of over 63 million bases, houses approximately 1,400 genes and is recognized for having the greatest gene density of the human chromosomes. It is the genetic home for a number of immunoglobulin (Ig) superfamily members, including the killer cell and leukocyte Ig-like receptors, a number of ICAMs, the CEACAM and PSG family and Fc receptors (FcRs). Key genes for eye color and hair color also map to chromosome 19.		

**— VALIDATION IMAGES —**

Sample: HepG2(Human) Cell Lysate at 30 ug  
A549 (Human) Cell Lysate at 30 ug U251(Human)  
Cell Lysate at 30 ug Primary: Anti-OCEL1  
(bs-9368R) at 1/1000 dilution Secondary:  
IRDye800CW Goat Anti-Rabbit IgG at 1/20000  
dilution Predicted band size: 29 kD Observed  
band size: 27 kD