

**bs-18461R****[ Primary Antibody ]****ZC3H13 Rabbit pAb****Bioss**  
**ANTIBODIES**

www.bioss.com.cn

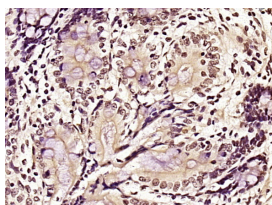
sales@bioss.com.cn

techsupport@bioss.com.cn

400-901-9800

**— DATASHEET —**

<b>Host:</b> Rabbit	<b>Isotype:</b> IgG	<b>Applications:</b> <b>IHC-P</b> (1:100-500) <b>IHC-F</b> (1:100-500) <b>IF</b> (1:100-500)  <b>Reactivity:</b> Mouse (predicted: Human, Rat, Rabbit, Pig, Sheep, Cow, Dog, Horse)  <b>Predicted MW.:</b> 196 kDa  <b>Subcellular Location:</b> Nucleus
<b>Clonality:</b> Polyclonal		
<b>GeneID:</b> 23091	<b>SWISS:</b> Q5T200	
<b>Target:</b> ZC3H13		
<b>Immunogen:</b> KLH conjugated synthetic peptide derived from human ZC3H13: 1201-1300/1668.		
<b>Purification:</b> affinity purified by Protein A		
<b>Concentration:</b> 1mg/ml		
<b>Storage:</b> 0.01M TBS (pH7.4) with 1% BSA, 0.02% Proclin300 and 50% Glycerol. Shipped at 4°C. Store at -20°C for one year. Avoid repeated freeze/thaw cycles.		
<b>Background:</b> ZC3H13 is a 1668 amino acid protein that contains one C3H1-type zinc finger. ZC3H13 is phosphorylated upon DNA damage, most likely by ATM or ATR. Two isoforms of ZC3H13 exists as a result of alternative splicing events. The gene encoding ZC3H13 maps to chromosome 13, which contains around 114 million base pairs and 400 genes. Key tumor suppressor genes on chromosome 13 include the breast cancer susceptibility gene, BRCA2, and the RB1 (retinoblastoma) gene. As with most chromosomes, polysomy of part or all of chromosome 13 is deleterious to development and decreases the odds of survival. Trisomy 13, also known as Patau syndrome, is quite deadly and the few who survive past one year suffer from permanent neurologic defects, difficulty eating and vulnerability to serious respiratory infections.		

**— VALIDATION IMAGES —**

Paraformaldehyde-fixed, paraffin embedded (Mouse intestine); Antigen retrieval by boiling in sodium citrate buffer (pH6.0) for 15min; Block endogenous peroxidase by 3% hydrogen peroxide for 20 minutes; Blocking buffer (normal goat serum) at 37°C for 30min; Antibody incubation with (ZC3H13) Polyclonal Antibody, Unconjugated (bs-18461R) at 1:400 overnight at 4°C, followed by operating according to SP Kit(Rabbit) (sp-0023) instructions and DAB staining.