

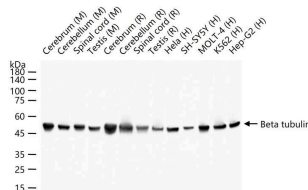
bsm-33034M**[Primary Antibody]****Beta tubulin Mouse mAb, Loading Control****Bioss**
ANTIBODIES

www.bioss.com.cn

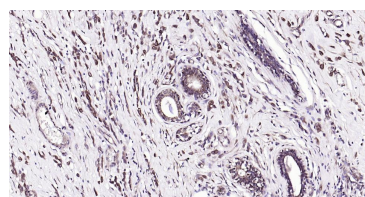
sales@bioss.com.cn

techsupport@bioss.com.cn

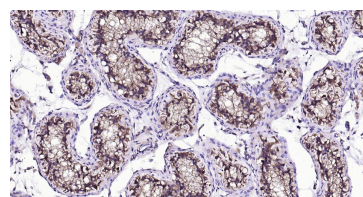
400-901-9800

— DATASHEET —**Host:** Mouse**Isotype:** IgG1**Clonality:** Monoclonal**CloneNo.:** 7G3**GeneID:** 203068**SWISS:** P07437**Target:** Beta tubulin**Purification:** affinity purified by Protein G**Concentration:** 1mg/ml**Storage:** 0.01M TBS (pH7.4) with 1% BSA, 0.02% Proclin300 and 50% Glycerol.
Shipped at 4°C. Store at -20°C for one year. Avoid repeated freeze/thaw cycles.**Background:** This gene encodes a beta tubulin protein. This protein forms a dimer with alpha tubulin and acts as a structural component of microtubules. Mutations in this gene cause cortical dysplasia, complex, with other brain malformations 6. Alternative splicing results in multiple splice variants. There are multiple pseudogenes for this gene on chromosomes 1, 6, 7, 8, 9, and 13. [provided by RefSeq, Jun 2014]**Applications:** **WB** (1:10000-50000)**IHC-P** (1:100-500)**IHC-F** (1:100-500)**IF** (1:100-500)**ICC/IF** (1:100-500)**Reactivity:** Human, Mouse, Rat
(predicted: Rabbit, Pig, Sheep, Cow, Chicken, Dog, GuineaPig, Monkey, Insect/Yeast)**Predicted MW.:** 50 kDa**Subcellular Location:** Cytoplasm**— VALIDATION IMAGES —**

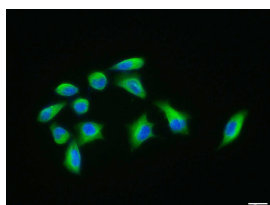
25 ug total protein per lane of various lysates (see on figure) probed with Beta tubulin monoclonal antibody, unconjugated (bsm-33034M) at 1:10000 dilution and 4°C overnight incubation. Followed by conjugated secondary antibody incubation at r.t. for 60 min.



Paraformaldehyde-fixed, paraffin embedded Human Breast Cancer; Antigen retrieval by boiling in sodium citrate buffer (pH6.0) for 15 min; Antibody incubation with Beta tubulin Monoclonal Antibody, Unconjugated(bsm-33034M) at 1:200 overnight at 4°C, followed by conjugation to the SP Kit (Mouse, sp-0024) and DAB (C-0010) staining.



Paraformaldehyde-fixed, paraffin embedded Human Testicles; Antigen retrieval by boiling in sodium citrate buffer (pH6.0) for 15 min; Antibody incubation with Beta tubulin Monoclonal Antibody, Unconjugated(bsm-33034M) at 1:200 overnight at 4°C, followed by conjugation to the SP Kit (Mouse, sp-0024) and DAB (C-0010) staining.



HeLa cell; 4% Paraformaldehyde-fixed; Triton X-100 at room temperature for 20 min; Blocking buffer (normal goat serum, C-0005) at 37°C for 20 min; Antibody incubation with (Beta tubulin) monoclonal Antibody, Unconjugated (bsm-33034M) 1:100, 90 minutes at 37°C; followed by a conjugated Goat Anti-Rabbit IgG antibody at 37°C for 90 minutes, DAPI (blue, C02-04002) was used to stain the cell nuclei.

— SELECTED CITATIONS —

- **[IF=56.9]** Jaron A. M. Mercer. et al. Continuous evolution of compact protein degradation tags regulated by selective molecular glues. SCIENCE. 2024 Mar;383(6688) WB ;Human. 38484051
- **[IF=11.556]** Yan Wang. et al. Sult2b1 deficiency exacerbates ischemic stroke by promoting pro-inflammatory macrophage polarization in mice. Theranostics. 2021; 11(20): 10074–10090 WB ;Mouse. 34815805
- **[IF=10]** Xiang-Yu Wang. et al. Enhanced Tumor Immunotherapy by Triple Amplification Effects of Nanomedicine on the STING Signaling Pathway in Dendritic Cells. ADV HEALTHC MATER. 2024 Oct;;2403143 WB ;Mouse. 39440648
- **[IF=9.685]** Jia, Xiuqin. et al. Inhibition of autophagy potentiates the cytotoxicity of the irreversible FGFR1-4 inhibitor FIIN-2 on lung adenocarcinoma. CELL DEATH DIS. 2022 Aug;13(8):1-12 WB ;Human. 36042213
- **[IF=9]** Wang Shaowen. et al. LINC01133 can induce acquired ferroptosis resistance by enhancing the FSP1 mRNA stability through forming the LINC01133-FUS-FSP1 complex. CELL DEATH DIS. 2023 Nov;14(11):1-14 WB ;Human. 38007473