

**bs-20116R**

**[ Primary Antibody ]**

## CSFV E2 Rabbit pAb

**BioSS**  
ANTIBODIES

www.bioss.com.cn

sales@bioss.com.cn

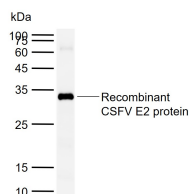
techsupport@bioss.com.cn

400-901-9800

### — DATASHEET —

<b>Host:</b> Rabbit	<b>Isotype:</b> IgG	<b>Applications:</b> <b>WB</b> (1:500-2000) <b>ELISA</b> (1:5000-10000)
<b>Clonality:</b> Polyclonal		<b>Reactivity:</b> CSFV
<b>Target:</b> CSFV E2		
<b>Purification:</b> affinity purified by Protein A		
<b>Concentration:</b> 1mg/ml		
<b>Storage:</b> 0.01M TBS (pH7.4) with 1% BSA, 0.02% Proclin300 and 50% Glycerol. Shipped at 4°C. Store at -20°C for one year. Avoid repeated freeze/thaw cycles.		<b>Predicted MW.:</b> 42 kDa
<b>Background:</b> Classical swine fever(CSF) is a kind of acute and intense contagious disease in swine, it material damages swine industry. CSF could cause swine appearing disseminated hemorrhage in systemic organ and tissue, degeneration and necrosis in small vascular and capillary endothelial cells. Classical swine fever virus (CSFV) belongs to genera Pestivirus, family Flaviviridae, it' s genome total length is 12.3Kb,including a big ORF, encoding 11 structural and nonstructural proteins.		<b>Subcellular Location:</b> Cell membrane

### — VALIDATION IMAGES —



Sample: Lane 1: Recombinant CSFV E2 protein

Primary: Anti-CSFV E2 (bs-20116R) at 1/1000

dilution Secondary: IRDye800CW Goat Anti-

Rabbit IgG at 1/20000 dilution Predicted band

size: 42 kDa Observed band size: 32 kDa