

bs-23238R**[Primary Antibody]****BioSS**
ANTIBODIES

www.bioss.com.cn

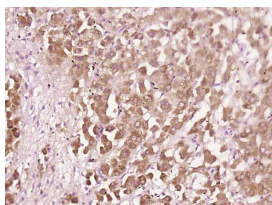
sales@bioss.com.cn

techsupport@bioss.com.cn

400-901-9800

CXCL10/IP10 Rabbit pAb**— DATASHEET —**

Host: Rabbit	Isotype: IgG	Applications: IHC-P (1:100-500)
Clonality: Polyclonal		IHC-F (1:100-500)
GeneID: 3627	SWISS: P02778	IF (1:100-500)
Target: CXCL10/IP10		Reactivity: Human
Immunogen: KLH conjugated synthetic peptide derived from human CXCL10/IP10: 29-70/98.		
Purification: affinity purified by Protein A		
Concentration: 1mg/ml		Predicted MW.: 10 kDa
Storage: 0.01M TBS (pH7.4) with 1% BSA, 0.02% Proclin300 and 50% Glycerol. Shipped at 4°C. Store at -20°C for one year. Avoid repeated freeze/thaw cycles.		Subcellular Location: Secreted
Background: bs-1502P is one synthetic peptide derived from mouse CXCL10. Interferon-gamma-inducible 10 kD protein (IP-10), is a CXC chemokine with chemoattractant properties for CD4-positive T cells and inhibits early normal and leukemic hemopoietic progenitor proliferation. IP-10 is produced by a wide variety of cell types ranging from neutrophils and monocytes to hepatocytes, endothelial cells and keratinocytes. The cytokine is reported to be involved in a scale of inflammatory pathologies such as HIV encephalitis, cutaneous T cell lymphoma, chronic hepatitis and acute anterior uveitis. Various observations strongly suggest a role for the CXC chemokines IL-8 and IP-10 in the regulation of angiogenic activity in cancer and in idiopathic pulmonary fibrosis.		

— VALIDATION IMAGES —

Paraformaldehyde-fixed, paraffin embedded (Human liver cancer); Antigen retrieval by boiling in sodium citrate buffer (pH6.0) for 15min; Block endogenous peroxidase by 3% hydrogen peroxide for 20 minutes; Blocking buffer (normal goat serum) at 37°C for 30min; Antibody incubation with (CXCL10) Polyclonal Antibody, Unconjugated (bs-23238R) at 1:500 overnight at 4°C, followed by a conjugated secondary (sp-0023) for 20 minutes and DAB staining.

— SELECTED CITATIONS —

- **[IF=6]** Rui Niu. et al. Curcumin inhibits ferroptosis-mediated vascular occlusion by regulating the CXCL10/CXCR3 axis in retinopathy of prematurity..MOLECULAR MEDICINE.2025 Mar 24;31(1):113. IF ;Mouse. 40128669
- **[IF=4.493]** Fan Jiahui. et al. Study on the Correlation between Interleukin-27 and CXCL10 in Pulmonary Tuberculosis. J IMMUNOL RES. 2022;2022:2932837 IHC ;Human. 35785034