

bs-1197R**[Primary Antibody]****Bioss**
ANTIBODIES

www.bioss.com.cn

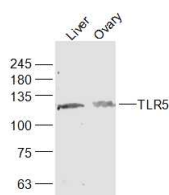
sales@bioss.com.cn

techsupport@bioss.com.cn

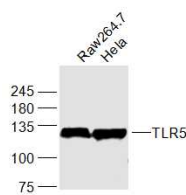
400-901-9800

TLR5 Rabbit pAb**— DATASHEET —**

Host: Rabbit Clonality: Polyclonal GeneID: 53791 Target: TLR5 Immunogen: KLH conjugated synthetic peptide derived from mouse TLR5: 701-810/873. Purification: affinity purified by Protein A Concentration: 1mg/ml Storage: 0.01M TBS (pH7.4) with 1% BSA, 0.02% Proclin300 and 50% Glycerol. Shipped at 4°C. Store at -20°C for one year. Avoid repeated freeze/thaw cycles. Background: The Toll like receptor (TLR) family in mammal comprises a family of transmembrane proteins characterized by multiple copies of leucine rich repeats in the extracellular domain and IL1 receptor motif in the cytoplasmic domain. Like its counterparts in Drosophila, TLRs signal through adaptor molecules and could constitute an important and unrecognized component of innate immunity in humans. The TLR family is a phylogenetically conserved mediator of innate immunity that is essential for microbial recognition. TLRs characterized so far activate the MyD88/interleukin 1 receptor-associated kinase (IRAK) signaling pathway. Toll-like receptor 5 (TLR5) expression is upregulated following exposure to bacteria or to the TLR5 agonist, flagellin. Gram-negative bacteria, stimulate monocyte/macrophage cells in a TLR5-specific, CD14-independent manner. The TLR5 receptor thus appears to be the principal means by which the innate immune system recognizes flagellated bacterial pathogens.	Isotype: IgG SWISS: Q9JLF7 Applications: WB (1:500-2000) Reactivity: Human, Mouse (predicted: Rat) Predicted MW.: 95 kDa Subcellular Location: Cell membrane
---	---

— VALIDATION IMAGES —

Sample: Liver (Mouse) Lysate at 40 ug Ovary (Mouse) Lysate at 40 ug
Primary: Anti-TLR5 (bs-1197R) at 1/1000 dilution
Secondary: IRDye800CW Goat Anti-Rabbit IgG at 1/20000 dilution
Predicted band size: 95 kD Observed band size: 130 kD



Sample: Raw264.7 (Mouse) Cell Lysate at 30 ug HeLa (Human) Cell Lysate at 30 ug
Primary: Anti-TLR5 (bs-1197R) at 1/1000 dilution
Secondary: IRDye800CW Goat Anti-Rabbit IgG at 1/20000 dilution
Predicted band size: 95 kD Observed band size: 130 kD

— SELECTED CITATIONS —

- **[IF=5.959]** Shi D et al. TLR5: A prognostic and monitoring indicator for triple-negative breast cancer. Cell Death Dis. 2019 Dec 18;10(12):954. IHC ;Mouse. 31852883
- **[IF=3.7]** Sun, Hukui, et al. "Non - invasive imaging of allogeneic transplanted skin graft by 131I - anti - TLR5 mAb." Journal of Cellular and Molecular Medicine (2014). IHC ;="Mouse". 25283154
- **[IF=4.26]** Li, Chengcheng, et al. "Phycocyanin attenuates pulmonary fibrosis via the TLR2-MyD88-NF-κB signaling

Important Note: This product as supplied is intended for research use only, not for use in human, therapeutic or diagnostic applications.

- pathway." Scientific Reports 7 (2017). WB ;="Mouse". 28725012
- **[IF=3.829]** Wang Ruibiao. et al. Effects of exosomes derived from *Trichinella spiralis* infective larvae on intestinal epithelial barrier function. VET RES. 2022 Dec;53(1):1-11 WB ;Pig. 36273217
 - **[IF=3.42]** Hao, Jing, et al. "rFliC prolongs allograft survival in association with the activation of recipient Tregs in a TLR5-dependent manner." Cellular & molecular immunology (2013). WB ;="Mouse". 24097035