

bs-6852R**[Primary Antibody]****Alpha-1-Acid Glycoprotein Rabbit pAb****BioSS**
ANTIBODIES

www.bioss.com.cn

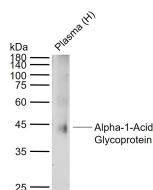
sales@bioss.com.cn

techsupport@bioss.com.cn

400-901-9800

— DATASHEET —

Host: Rabbit	Isotype: IgG	Applications: WB (1:500-2000)
Clonality: Polyclonal		
GeneID: 5004	SWISS: P02763	
Target: Alpha-1-Acid Glycoprotein		
Immunogen: KLH conjugated synthetic peptide derived from human Alpha-1-Acid Glycoprotein: 101-201/201.		
Purification: affinity purified by Protein A		Reactivity: Human
Concentration: 1mg/ml		
Storage: 0.01M TBS (pH7.4) with 1% BSA, 0.02% Proclin300 and 50% Glycerol. Shipped at 4°C. Store at -20°C for one year. Avoid repeated freeze/thaw cycles.		Predicted MW.: 22 kDa
Background: This gene encodes a key acute phase plasma protein. Because of its increase due to acute inflammation, this protein is classified as an acute-phase reactant. The specific function of this protein has not yet been determined; however, it may be involved in aspects of immunosuppression. [provided by RefSeq, Jul 2008]		Subcellular Location: Secreted

— VALIDATION IMAGES —

Sample: Lane 1: Human Plasma Primary: Anti-Alpha-1-Acid Glycoprotein (bs-6852R) at 1/1000 dilution Secondary: IRDye800CW Goat Anti-Rabbit IgG at 1/20000 dilution Predicted band size: 22 kDa Observed band size: 44 kDa

— SELECTED CITATIONS —

- **[IF=3.13]** Wang, Robert YL, et al. "Proteome Demonstration of Alpha-1-Acid Glycoprotein and Alpha-1-Antichymotrypsin." Pediatric Infectious Disease Journal (2014). WB ;="Human". 25170552