

phospho-HEF1 (Ser369) Rabbit pAb

Catalog Number: bs-16681R

Target Protein: phospho-HEF1 (Ser369)

Concentration: 1mg/ml

Form: Liquid

Host: Rabbit

Clonality: Polyclonal

Isotype: IgG

Applications: WB (1:500-2000)

Reactivity: Human (predicted: Sheep, Cow, Horse)

Predicted MW: 93 kDa

Entrez Gene: 4739

Swiss Prot: Q14511

Source: KLH conjugated synthesised phosphopeptide derived from human HEF1 around the phosphorylation site of Ser369: RL(p-S)FS.

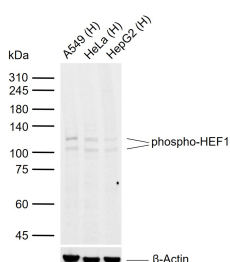
Purification: affinity purified by Protein A

Storage: 0.01M TBS (pH7.4) with 1% BSA, 0.02% Proclin300 and 50% Glycerol.

Shipped at 4°C. Store at -20°C for one year. Avoid repeated freeze/thaw cycles.

Background: Docking protein which plays a central coordinating role for tyrosine-kinase-based signaling related to cell adhesion. May function in transmitting growth control signals between focal adhesions at the cell periphery and the mitotic spindle in response to adhesion or growth factor signals initiating cell proliferation. May play an important role in integrin beta-1 or B cell antigen receptor (BCR) mediated signaling in B- and T-cells. Integrin beta-1 stimulation leads to recruitment of various proteins including CRK, NCK and SHPTP2 to the tyrosine phosphorylated form.

VALIDATION IMAGES



Sample: Lane 1: Human A549 cell lysates Lane 2: Human HeLa cell lysates Lane 3: Human HepG2 cell lysates
Primary: Anti-phospho-HEF1 (Ser369) (bs-16681R) at 1/1000 dilution Secondary: IRDye800CW Goat Anti-Rabbit IgG at 1/20000 dilution Predicted band size: 93 kDa Observed band size: 105,115 kDa