

bs-16676R**[Primary Antibody]****INSM2 Rabbit pAb****Bioss**
ANTIBODIES

www.bioss.com.cn

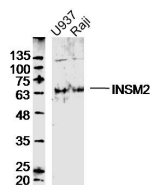
sales@bioss.com.cn

techsupport@bioss.com.cn

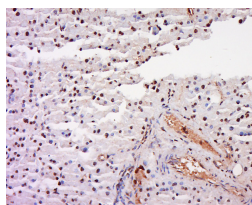
400-901-9800

— DATASHEET —

Host: Rabbit Clonality: Polyclonal GeneID: 84684 Target: INSM2 Immunogen: KLH conjugated synthetic peptide derived from human INSM2: 401-500/566. Purification: affinity purified by Protein A Concentration: 1mg/ml Storage: 0.01M TBS (pH7.4) with 1% BSA, 0.02% Proclin300 and 50% Glycerol. Shipped at 4°C. Store at -20°C for one year. Avoid repeated freeze/thaw cycles. Background: INSM2 is a 566 amino acid nuclear protein. INSM2 is believed to act as a growth or tumor suppressor in certain neurons and in liver cells. INSM2 contains five zinc finger C2H2-type domains which bind nucleic acids. Zinc fingers are composed of 25-30 amino acid residues and have the ability to bind about five nucleotides. C2H2-type zinc fingers have two cysteines on one extremity of the domain, and two histidines on the other extremity. These four cysteines and histidines interact with one zinc atom, resulting in the finger-like conformation of the domain. It is believed that the C2H2-type zinc fingers require the binding of a zinc atom in order for the finger to bind DNA or RNA.	Isotype: IgG SWISS: Q96T92	Applications: WB (1:500-2000) IHC-P (1:100-500) IHC-F (1:100-500) IF (1:100-500)
		Reactivity: Human, Rat (predicted: Mouse, Rabbit, Pig, Sheep, Cow)
		Predicted MW.: 58 kDa
		Subcellular Location: Nucleus

— VALIDATION IMAGES —

Sample: U937 Cell (Human) Lysate at 40 ug
Cell (Human) Lysate at 40 ug
Primary: Anti-INSM2 (bs-16676R) at 1/300 dilution
Secondary: IRDye800CW Goat Anti-Rabbit IgG at 1/20000 dilution
Predicted band size: 58 kD
Observed band size: 63 kD



Tissue/cell: rat pancreas tissue; 4% Paraformaldehyde-fixed and paraffin-embedded; Antigen retrieval: citrate buffer (0.01M, pH 6.0), Boiling bathing for 15min; Block endogenous peroxidase by 3% Hydrogen peroxide for 30min; Blocking buffer (normal goat serum, C-0005) at 37°C for 20 min; Incubation: Anti-INSM2 Polyclonal Antibody, Unconjugated(bs-16676R) 1:500, overnight at 4°C, followed by conjugation to the secondary antibody(SP-0023) and DAB(C-0010) staining