

bs-16674R**[Primary Antibody]****INSL6 Rabbit pAb****Bioss**
ANTIBODIES

www.bioss.com.cn

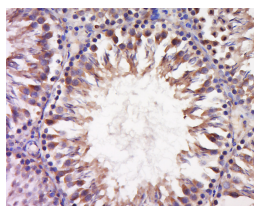
sales@bioss.com.cn

techsupport@bioss.com.cn

400-901-9800

— DATASHEET —

Host: Rabbit	Isotype: IgG	Applications: IHC-P (1:100-500) IHC-F (1:100-500) IF (1:100-500) Reactivity: Rat (predicted: Human) Predicted MW.: 22 kDa Subcellular Location: Secreted
Clonality: Polyclonal		
GeneID: 11172	SWISS: Q9Y581	
Target: INSL6		
Immunogen: KLH conjugated synthetic peptide derived from human INSL6: 21-100/213.		
Purification: affinity purified by Protein A		
Concentration: 1mg/ml		
Storage: 0.01M TBS (pH7.4) with 1% BSA, 0.02% Proclin300 and 50% Glycerol. Shipped at 4°C. Store at -20°C for one year. Avoid repeated freeze/thaw cycles.		
Background: The protein encoded by this gene contains a classical signature of the insulin superfamily and is significantly similar to relaxin and relaxin-like factor. This gene is preferentially expressed in testis. Its expression in testis is restricted to interstitial cells surrounding seminiferous tubules, which suggests a role in sperm development and fertilization. [provided by RefSeq, Jul 2008]		

— VALIDATION IMAGES —

Tissue/cell: Rat testis tissue; 4% Paraformaldehyde-fixed and paraffin-embedded; Antigen retrieval: citrate buffer (0.01M, pH 6.0), Boiling bathing for 15min; Block endogenous peroxidase by 3% Hydrogen peroxide for 30min; Blocking buffer (normal goat serum, C-0005) at 37°C for 20 min; Incubation: Anti-INSL6 Polyclonal Antibody, Unconjugated(bs-16674R) 1:500, overnight at 4°C, followed by conjugation to the secondary antibody(SP-0023) and DAB(C-0010) staining